

---

**December 2020**

---

---

**City of Somersworth, NH**

One Government Way  
Somersworth, NH 03878  
603-692-4262

**City Hall Hours**

**Monday - Friday**

8:00 a.m. - 4:30 p.m.

**Wednesday**

8:00 a.m. - 6:00 p.m.

---

Visit our  
website



**Scheduled December  
City Council Meeting**

Monday, December 14 at 7:00 p.m.

**Keeping with CDC guidelines and  
following social distancing the City  
Council Meetings will be taking place at  
the Blackbox Theater at Somersworth  
High School Career Technical Center,  
18 Cemetery Road (subject to change).**

**The Mayor's Corner**



**A Final Tribute:  
Honoring my Father Through a  
Plastic Santa**

For the last two holiday seasons I have published this piece honoring my father who for three years battled Alzheimer's. On June 12<sup>th</sup> of this year, he peacefully passed with my mother, my husband and I by his side. For those who knew "Gordy", his strong will continues to shine in all of us who love and our dedicated to the home we call Somersworth. While he physically may no longer be with us, for those who loved him, we will be reminded of him during the holidays from the light on the "plastic Santa" he so loves. The Hilliard family will always be blessed for the love and support the Hilltopper community gave us throughout my father's battle with Alzheimer's. [Read More](#)

**Land Use Board Meetings – Planning.  
Zoning Board of Adjustment, etc.**

These meetings will continue to be held in a ZOOM meeting format as being conducted now from the Council Chambers with the Chair and minimal attendance of other Board Members and Staff to allow for social distancing.

The Public will be allowed to attend, although we continue to encourage watching remotely and submitting comments in advance.

**Committee/Board Meetings this Month.**

**Public Works & Environment  
Committee - Council Chambers**

Tuesday, December 1 at 3:45 p.m.

**Site Review Technical Committee via  
Zoom**

Wednesday, December 2 at 10:30 a.m.

**Zoning Board of Adjustment via Zoom**

Wednesday, December 2 at 7:00 p.m.

**Joint Commission of Council & School  
Board via Zoom**

Wednesday, December 2 at 5:30 p.m.

**School Board Meeting at the Blackbox  
Theatre at the Career Technical Center**

Tuesday, December 8 at 7:00 pm

**Fire Station Building Committee -  
Council Chambers**

Wednesday, December 9 at 8:30 a.m.

**Minor Site Plan via Zoom**

Wednesday, December 9 at 2:00 p.m.

**Conservation Committee via Zoom**

Wednesday, December 9 at 6:00 p.m.

Thursday, December 10 at 6:00 p.m.

Two hundred and forty four years ago, the experiment of American democracy began. Forged upon the foundation of self – determined and inalienable rights, for the first time in human history to base of power would not lie with nobility and a military ruler, but with the people themselves, assembling to choose those to govern based upon their concert. Thus began the journey of the human spirit, the voices echoing throughout a young nation as citizens from all shores traveled to the birthplace of freedom, liberty and justice.

**Read More**

**Mayor's Office Hours**

Monday: 5:00 p.m. - 6:00 p.m.

Wednesday: 5:00 p.m. - 6:00 p.m.

Friday: 4:00 p.m. - 5:00 p.m.

People are welcome to stop by during this time. Or, if you prefer, you can make an appointment by calling Brenda at 692-9503 or email

[bbreda@somersworth.com](mailto:bbreda@somersworth.com)

Residents are encouraged to wear face coverings/masks and meetings will take place in the Council Chambers to adhere to CDC Guidelines of Social Distancing.

---

**Missed the Meeting?  
Catch it Again Online**

Don't forget: If you missed the live City Council, or Planning Board on Channels 22, you can catch it again, online and on demand. Simply visit

<https://www.somersworth.com/home/pages/watch-somersworth-city-hall-online>

to begin watching meetings on demand. Online meetings are organized by agenda item for convenience.

### Planning Board via Zoom

Wednesday, December 16 at 6:30 p.m.

### Historic District Commission via Zoom

Wednesday, December 23 at 7:00 p.m.

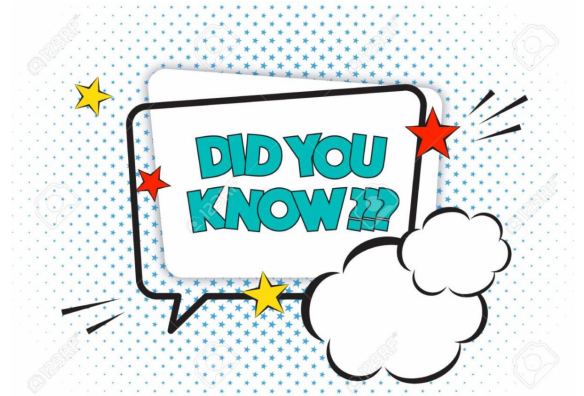
---

### **Don't Forget!**



City Hall's Dropbox is located outside City Hall entrance on Government Way. Dropbox may be used at any time for submitting property tax or utility payments or other drop off business. It is available and secure 24/7.

If you have question please call the City Clerk's office at 692-9511 or 692-9512.



Save yourself time and a trip to City Hall by registering your vehicle online. Online vehicle registration is easy, safe and secure!

For your convenience, you can pay motor vehicle registration by credit card.

For more information on E-registration process, [click here](#)



## **Tri-City Mayors**

### **Simple Steps to Stay Safe and Avoid COVID-19**

The Tri-City Mayors of Rochester, Dover, and Somersworth would like to remind everyone to wear a mask, wash your hands frequently, and maintain a social distance.

“We are all in this together,” said Mayor Robert Carrier, Dover. “We need to work together now more than ever to keep our communities safe.”

“This is not just to protect you... It’s to protect the people around you,” said Mayor Caroline McCarley, Rochester. “There are many others in our community that are already vulnerable. Washing your hands and wearing a mask is the least we can do to protect them.”

“We must all wear a mask, practice social distancing, practice good hygiene, and avoid public places if feeling ill,” said Mayor Dana Hilliard, Somersworth. “Simple steps will continue to hold the virus at bay. We must be diligent if we are to move forward in returning to some norms in the future.”

In addition, to prevent further spread of the disease in the community, the Tri-City Mayors ask that everyone take the following precautions to prevent the spread of the disease:

- Stay home if you have a fever or are not feeling well. Stay home for any new or unexplained illness, no matter how mild.
- Wash your hands often with soap and water for at least 20 seconds or use an alcohol-based hand sanitizer that contains at least 60% alcohol if soap and water are not available.
- Avoid close contact with others. When outside your home, please adhere to social distancing guidelines and keep a distance of at least 6 feet between yourself and others.
- Wear a cloth face covering that covers your mouth and nose to protect others when in public areas.
- Cover your mouth and nose with a tissue when you cough or sneeze, then throw the tissue in the trash and wash your hands.
- Avoid touching your eyes, nose, or mouth with unwashed hands.



### **Thank You Election Workers**

Thank you for your dedication in providing your fellow Citizens with a safe and efficient voting experience during the 2020 General Election. The work performed and the long hours you all put in have not gone unnoticed. During an unprecedented Election in a turbulent climate you stepped up and made the City of Somersworth Proud!

---



**Somersworth Veterans Memorial at Stein Park**  
**Photo Courtesy of Somersowrth Resident Timothy Sweeney**

Please take a moment from your hectic lives to come by and visit this beautiful park, to remember the courage, dedication and the selflessness of these women and men who chose to serve a cause larger than oneself to protect our way of life.

***Thank You!***

Commemorative Bricks can still be purchased by anyone wishing to honor a Veteran who has served our Country. Bricks are red, 4 x 8 inches, that will be engraved with the name, military rank, branch and years of service for individual members and selectively placed throughout the entrance walkway.

Please visit the [website](#) or call 692-9506 for more information.

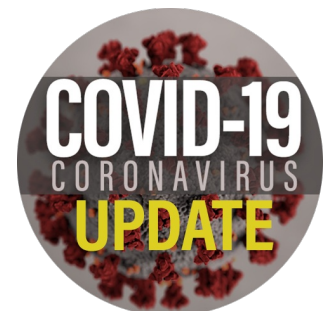
---

**Governor Issues Statewide Mask Mandate**

Gov. Chris Sununu announced Thursday, Nov. 19, he has issued an emergency order instituting a statewide mask mandate. The order follows the state's highest single-day total number of positive cases, which rose to 529 on Thursday.

The mask mandate will remain in effect through Jan. 15, 2021.

Beginning today, Nov. 20, everyone over the age of 5 in New Hampshire must wear mask or cloth face coverings over their noses and mouths when in public spaces, indoors or outdoors, when unable to maintain a physical distance of at least six feet from persons outside their own



households.

Per the order, “public spaces” includes any part of private or public property that is generally open or accessible to members of the general public. Public spaces include, but are not limited to, lobbies, waiting areas, outside plazas or patios, restaurants, retail businesses, streets, sidewalks, parks, beaches, elevators, restrooms, stairways, parking garages, etc.

According to the order, the mandate does not apply to the following:

- Educators, students, and staff within K-12 schools;
  - Any person with a medical condition or disability that prevents wearing a mask or other face covering;
  - Any person consuming food or drink or sitting at a restaurant or table to eat or drink;
  - Any person engaged in physical strenuous physical activity;
  - Any person giving a religious, political, media, educational, cultural, musical, or theatrical presentation or performance for an audience;
  - Any person who is deaf or hard of hearing, and any person while communicating with an individual who is deaf or hard of hearing or who has a disability, medical condition, or mental health condition that makes communication with that individual while wearing a mask or face covering difficult;
  - Any person obtaining or providing a service that requires the temporary removal of a mask or face covering;
  - Any person asked to remove a mask or face covering to verify an identity for lawful purposes;
- or
- Any public safety worker actively engaged in a public safety role and when a mask or face covering would seriously interfere in the performance of their public safety responsibilities.

The mandate also does not apply to individuals who decline to wear a mask or cloth face covering because of a medical or developmental issue or difficulty breathing.

The entire order [can be viewed here.](#)



## Department of Public Works & Utilities

### Solid Waste, Recycling, Bulky Waste Tips and Highlights

Solid Waste and Recycling News Holiday Update: There will be No Change to the regular schedule for residential trash and recycling collection as Christmas Eve (December 24) and Christmas Day (December 25) are on Thursday and Friday which are non - trash collection days in the City.

Reminder the next **Metal/Electronics Curbside Collection** by Public Works crews will occur on Monday, December 8. Residents should call by Friday, December 4 to be placed on the pick-up list. Use of bulky waste/metal waste stickers is required and can be purchased at City Hall, City Clerk office. Bulky waste/metal stickers can also be purchased at the DPW building at 18 Lilac Lane by check only. The number to call at Public Works is 692-4266.

## **Christmas Tree Drop Off Program**

The Department of Public Works will provide Christmas Tree Drop off and limited collection services during the month of January. Somersworth residents may drop off their Christmas trees at the Department of Public Works Facility located at 18 Lilac Lane. All ornaments and decorations must be removed as Highway personnel grind up the trees for future composting. A designated location within the main parking lot at the Facility will be provided for the drop off.

Public Works Highway crews will also collect residential Christmas Trees without ornaments and decorations, during the 2<sup>nd</sup> and 4<sup>th</sup> weeks in January following the standard trash and recycling collection services. Set out your tree by 7am which is the same time as you set out your trash and recyclables during this week and Highway personnel will collect and remove. As a reminder those dates are Monday, January 11, Tuesday, January 12, and Wednesday, January 13 for the first week; the second week is: Monday, January 25, Tuesday, January 26, and Wednesday, January 27.

**Please Note** while these set out dates are firm; the collection work is subject to weather related emergencies where Highway personnel need to respond to snow storm events during these winter months. Delays may occur with the planned tree collection schedule should our Highway personnel need to respond to a weather emergency.

## **Winter Parking Ban Alerts**

During the winter, parking bans are called typically when snow or ice conditions makes it unsafe for vehicles to park while City winter plow equipment is clearing roads and sidewalks. Call the recorded snow line for winter snow parking ban information at 603-692-9131. In addition, sign up for the City Manager's monthly newsletter by accessing the City website and receive regular email updates on a range of City informational topics, including parking bans. Also Check the City website for current postings on winter emergency parking bans as well at

[www.somersworth.com](http://www.somersworth.com)

## **Protect your Household Water Lines**

The colder weather can put your water pipes at risk of freezing and bursting which could cause extensive water damage. Here are a few things you can do to protect your water lines:

- Keep building temperatures as consistent as possible, never less than 55 degrees Fahrenheit.
- Insulate areas where water supply lines are located and eliminate drafts.
- If you have water pipes in basements, crawl spaces, or outside walls, insulate the pipes, using pipe-sleeves or other insulating material.
- Allow warm air to circulate by opening up doors to closets and cabinets where pipe chases are located.

If you suspect that a pipe is particularly susceptible to freezing, as an emergency measure, leave water running at a trickle to prevent freezing. This is never recommended as a permanent measure and should be monitored frequently. **Never** use torches or devices with open flames to thaw frozen pipes.

## **Private Snow in Public Ways? NO!**

Residents are reminded that our City Ordinance (Chapter 12) prohibits anyone from depositing ice or snow from private property onto the City streets or sidewalks. Residents are asked to remind their private snow plow operators that the snow from their driveways can not be pushed into the City streets. This activity inhibits pedestrians from safely accessing those City sidewalks that have snow from driveways and parking lots; it forces pedestrians to walk in the streets which is an unsafe situation.

## City Completes Furber Chapel Roof Replacement Project

An important historic preservation project was completed recently at the Forest Glade Cemetery Furber Chapel. The project involved replacing the old slate with new slate material, repairing roof structures and installing new copper flashing. The new slate material is a non-fading green slate which is a direct match to the original slate roof material. The overall project was funded in part by a \$30,000 Land and Community Heritage Investment Program (LCHIP) Grant, a \$10,000 State of New Hampshire Moose Plate Grant, funds from a Cemetery Trust Fund and general funds. The project involved the replacement of the slate roof on the chapel. The slate roof replacement serves to advance the historic preservation goals of the City Council and the Cemetery Trustees and preserves the 1898 Chapel.



The Furber Memorial Chapel stands among mature trees and elaborate Victorian gravestones in the City-owned Forest Glade Cemetery in Somersworth. Benefactor Lizzie Furber Poor, the daughter of a manager of the Boston and Maine Railroad, dedicated the chapel in 1898 in memory of her parents. Noted Boston architect Henry Vaughan created a distinguished Gothic-revival design, featuring pointed arches, buttressed stone walls, and a steeply pitched slate roof. The \$30,000 LCHIP grant allowed the City of Somersworth to remove and replace the original slate roof and install new copper flashing and a protective moisture barrier.

---

## Somersworth Fire Department & Emergency Management A Safety Message from the Fire Chief's Office

### Christmas Tree Safety

**Do Not Let the Holiday Blues Lead to a Red-Light Display:** What is the holiday season without a beautifully decorated Christmas tree? However, Christmas trees account for 240 fires annually across the country resulting in 13 deaths and more than \$16 million in property damage. Typically, shorts in electrical lights or open flames from candles, lighters, or matches start tree fires. Well-watered trees are not usually a problem, but dry and neglected Christmas trees can be a

significant fire hazard.

Even trees that have been well watered and cared for will eventually stop absorbing water and start to dry out. Artificial trees may not dry out, but keep in mind most are made from synthetic materials that can easily catch fire and burn almost as rapidly as a real tree. All trees, real or artificial, should be kept well away from direct heating sources such as fireplaces, wood stoves, or space heaters as well as open flames such as candles, lighters, and matches. Candles should also be placed away from Christmas trees, and out of the path of travel of children and pets that may knock it into a tree.

Check all lights before putting them on the tree for any cracks in the insulation. If they are cracked or fraying, dispose of them and replace them with a fresh set that bear the UL seal of approval.

Within three seconds of ignition, a dry tree is ablaze. At five seconds, the fire can extend up the tree and issue large quantities of thick black smoke and searing gases across the ceiling. Fresh air near the floor continues feeding the fire, and the heat layer high in the room begins to bank down, preheating other combustibles in the room. Within 40 seconds, a flash-over can occur, where the entire room erupts into flames, the oxygen supply is diminishing, and thick, dense smoke engulfs the entire room. If a Christmas tree ignites, get out of the house fast and stay out. Stay low below the smoke, go to your meeting place, and call 911 from outside on a cell phone or from a neighbor's phone.

A good rule of thumb is to never keep a live Christmas tree for more than a month. Do not dispose of your Christmas tree by burning it in a fireplace or woodstove. The pine trees have a lot of sap, which can lead to explosive burning once heated. Pine needles also burn hot and fast, and flames can quickly flare out of control and send sparks flying across a room or ignite creosote deposits in the chimney and cause a chimney fire.

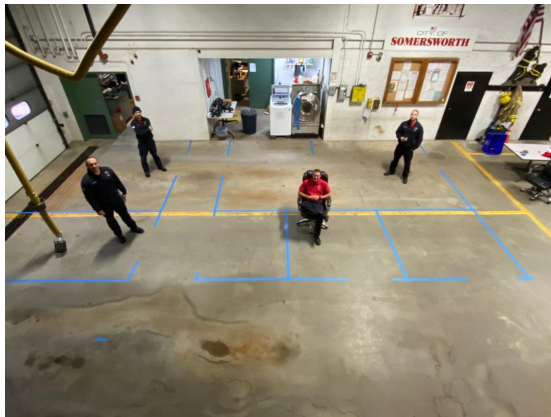
Don't let the pandemic and holiday blues cause you to take short cuts with Christmas tree safety otherwise you may see the red lights of the Fire Department. Please watch our fire safety video titled "Gilligan's Safety Adventure" and our Virtual Fire Department Open House for additional fire safety and cooking safety tips. The videos can be seen on Channel 22 or the Fire Department web site.

Feel free to call the Fire Station if you have questions about any emergency management, fire prevention, or life safety topics.

Please stay safe, be careful, and look out for each other.  
George Kramlinger, Fire Chief/Emergency Management Director



Happy Veteran's Day to all Veteran's including Somersworth Fire Department members Lt Mathew Moore (USN), Lt Michael Spinney (USAF), Lt Tyler Taatjes (USAF), FF William Staples (USN), and FF Brian Flood (USMC).



As part of an ongoing effort to update and finalize the design of the new Fire Station, Department members layout a partial floor plan with tape to check the functionality and dimensions of several rooms. FF Spenser Barnes is sitting in a janitorial closet that will likely be used as the temporary Chief's office during phased construction. With the Construction Management firm approved by the City Council, the project is rapidly accelerating.

Fire Department personnel practice aerial ladder maneuvering in tight quarters to include this scenario that may occur with a vehicle stuck in rising water at a low point on a roadway.



Somersworth Firefighters practice tactical emergency casualty care (TECC) while wearing ballistic personal protective equipment in response to a simulated active shooter/hostile event scenario.



## Somersworth Police & Friends



### Shop with a Cop

Target has again generously donated \$1,000 as part of their "Hero's and Helpers" Awards for our Shop with a Cop Program coordinated by our School Resource Officer, Ashley Fuller. 20 children have been selected who needed assistance in purchasing gifts for their families. This year the children will select gifts virtually and we will shop and wrap the presents for them. We will be delivering the wrapped family gifts to the children on December 16<sup>th</sup>.



**2021 Alarm Permit Renewal Notices** will be mailed out soon. If you own a fire alarm or security system alarm, ordinances require you to obtain a permit. To renew your permit the fee is \$10.00 if paid before the end of January, 2021 or \$20.00 after. If the alarm is for a residence and you are 65 or older, your permit is free. If you have questions, please call

Karen at the Somersworth PD at 603-841-2917 or email: [Kcantrell@Somersworth.com](mailto:Kcantrell@Somersworth.com).

If you own an alarm system (including those self installed) and have never obtained a permit, you can simply go to:

[https://www.somersworth.com/sites/somersworthnh/files/uploads/alarm\\_permit\\_application1.pdf](https://www.somersworth.com/sites/somersworthnh/files/uploads/alarm_permit_application1.pdf). The fee is \$25.00 for your first alarm permit.

### **Snow Emergencies/Winter Parking Ban**

Snow Emergencies can be called at any time, day or night. During Snow Emergencies, a Parking Ban is in effect. Always be aware of overnight weather forecasts and have alternative parking plans when snow is predicted. Your vehicle can be towed during a Snow Emergency and you will have to pay the tow charge to get it back. The purpose of the parking ban is to enable Public Works to safely maintain the roads. This means sometimes there will be a Snow Emergency declared even when it is no longer snowing. Snow emergencies are announced on the following stations: WTSN, WOKQ, WERZ, WSHK, WHEB, WMUR Channel 9 and Local Cable Station Channel 22. You may also call the **Winter Ban Hot Line at 692-9131** or go to [www.Somersworth.com](http://www.Somersworth.com). To receive news of parking bans via email, go to [www.Somersworth.com](http://www.Somersworth.com) and click "Subscribe-City Email".

Somersworth Police Department also uses our Facebook page to give important community information and we send out Nixle alerts for parking bans and other important information to cell phones and emails. You can sign up for Nixle at [www.Nixle.com](http://www.Nixle.com).

**Avoid the parking ticket and the tow (at your expense) by paying attention to snow emergency information.**

### **SNOW EMERGENCY PARKING**

Permits for Noble Street and River Street parking during snow emergency parking bans are now available.

Permit parking during snow emergency parking bans is allowed on Noble Street adjacent to the Noble Pines Park, and on River Street adjacent to Jules Bisson Park.

There are 17 spaces available on Noble Street and 5 spaces available on River Street. Permits will be issued on a first come, first served basis. The permits are only valid during the dates listed when there is a snow emergency parking ban in effect.

Vehicles parked in this area with a valid permit must be moved by 8 am on the day following the completion of the parking ban to allow for snow removal from the designated area. Vehicles not moved per the Ordinance will be subject to being towed at the owners expense.

Permits to park during parking bans resulting from a snow emergency are available from November 1st thru March 31st at a rate of \$20.00 per month, and are available at the Police Department. Please call 692-3131 for more information.

# PROTECT YOUR EVERY DAY

If you **see** something,  
**say** something®

**REPORT SUSPICIOUS ACTIVITY**

## Call 9-1-1

Somersworth Police Dispatch  
Somersworth Police Crime Line

603-692-3131  
603-692-9111



"If You See Something, Say Something" used with permission of the NY Metropolitan Transportation Authority.



### **Somersworth Crime Line:**

You can leave anonymous information at  
692-9111 - 24 hours a day/7 days a week.



Somersworth Police Department also uses our Facebook page to give  
important community information.

## **What's Happening in Recreation**

### **Youth Rec Basketball & Biddy Basketball Program Cancellation Notice**

Due to the many safety challenges resulting from the COVID-19 Pandemic, the City has made the difficult decision to cancel our 2020-2021 Rec Youth Basketball Program for children in grades 1-6 and our 2021 Biddy Basketball Program for children ages 3-6. Please know this decision was not made lightly as we recognize the important role our programs have in the community.

In lieu of offering our basketball programs, Recreation staff will focus on providing virtual resources and ideas to help families stay active and creative during the winter months. We encourage you to follow “Somersworth Recreation” on Facebook & visit our website as we’ll be posting our weekly RECspiration activity newsletter as well as providing additional resources, ideas, program updates, and more.

Best Regards-  
Somersworth Recreation Staff

---

## What's Happening at Somersworth Library



Come to the Library for our Take-and-Make craft kits for kids and teens. Are you borrowing with our no-contact curbside service? Just ask us to include Take-and-Make crafts when you call to arrange your pick-up and we will add them to your bag!

Looking for a way to give to the Community this December? The Library's Wish List is up! Find our wished-for-books and movies hanging on snowflakes this year. You can see them on our Main Level, as well as on our Facebook Page.

The Grandfather Clock is fixed! Stop by the upper level on your next visit to see it in action. If you are there on the hour or half-hour, you can hear it's lovely chime!

Did you know that anyone with a Library card and a smartphone, tablet, e-reader, or computer can borrow ebooks and digital audiobooks? Browse our New Hampshire Downloadable Books collection at [nh.overdrive.com](http://nh.overdrive.com). Not sure how to get started? Visit or call the Library and we will teach you how!

We are still offering curbside service though for anyone not ready to enter public buildings. Curbside is available all hours the library is open. Programming will not resume until it is safe to meet in groups.

While the library regularly purchases best sellers, please let us know if you read a review or hear of a title you'd like the library to purchase. We aim to create a collection that serves the needs and interests of the community.

### The Hours of the Library are:

Tuesday & Wednesday: 11 a.m. - 7:00 p.m.  
Thursday, Friday & Saturday: 9 a.m. - 5:00 p.m.



Have you seen our Facebook page

<https://www.facebook.com/SomersworthLibrary/> It's updated at least once a week and usually more. You don't have to be on Facebook to find links to author-related videos, new books and virtual events.

---

#### GREATER SEACOAST COMMUNITY HEALTH

**Goodwin**  
Community Health

**Families  
First**

**Lilac City**  
Pediatrics

To stay on top of what's going on at Families First, please sign up for their [newsletters](#).

parent and family programs, monthly parenting tips and ideas, useful links and more. Sent monthly. ([Read issues.](#))

Family Focus: Info on each month's

#### **Individual Support & Group Programs for Parents**

While the pandemic keeps us from meeting in person, we still offer many options for group and individual parent education and support. Parenting is one of the hardest and most important jobs there is. Let us help you build your network of support, connect to local resources, manage stress, learn about child development and expand your parenting toolbox.

See our Fall 2020 programs by below:

# Parent & Family Programs | Fall 2020

All families are welcome. All services are free.

Learn more at **(603) 422-8209** | **FamiliesFirstSeacoast.org**

## Individual Support

### PARENTING CHATS

Sign up for a confidential conversation to discuss parenting challenges you are facing. Chats can be by phone or Zoom. Look for "Parenting Chat" on Mondays, Tuesdays & Wednesdays at [tinyurl.com/FFParenting](https://tinyurl.com/FFParenting)

### KINSHIP CAREGIVER PROGRAM

Our Kinship Navigator provides resources, information and support to grandparents and other relatives who are raising children.

### PHONE SUPPORT

Family Center staff are available if you need help finding resources for your family or you have a parenting question or concern: **(603) 422-8209**.

## Fall 2020 Classes & Groups

We offer a rotating schedule of parenting classes and support groups using the Zoom app. Coming up:

- Mother-to-Mother Group
- Relative Caregiver Group
- Positive Solutions for Families
- Parenting Journey
- ACT for Strong Families
- and more

Program listings and links to sign up:  
[tinyurl.com/FFParenting](https://tinyurl.com/FFParenting)

Monthly e-newsletter:  
[tinyurl.com/FamilyFocusSubscribe](https://tinyurl.com/FamilyFocusSubscribe)

GREATER SEACOAST COMMUNITY HEALTH

**Goodwin**  
Community Health

**Families**  
First

**Lilac City**  
Pediatrics

## Home Visiting

Your home visitor will help you set goals and move forward to achieve them. Meetings usually take place on Zoom; limited in-person meetings, including outdoors, are also offered.

Home visitors assist with navigating school, insurance and medical systems, connecting to local resources, and helping you support your children as they grow and learn.

The **Partners in Health** program offers home visiting services specific to families with children who have chronic health conditions.

Call us to learn more or to sign up:  
**(603) 422-8209**.

Parents, grandparents, foster parents and relative caregivers parenting children of any age are welcome. Programs are free. Fall 2020 programs are offered by Zoom or phone, with limited in-person meetings. Give us a call to learn more: **603-422-8209** or sign up [HERE](#)



**All-in-One Children  
Care**  
Medical, Dental and  
Behavioral Health Care for  
your Child

Visit us in Somersworth,  
Rochester and Portsmouth.

[READ MORE](#)

# It's more than a meal application.

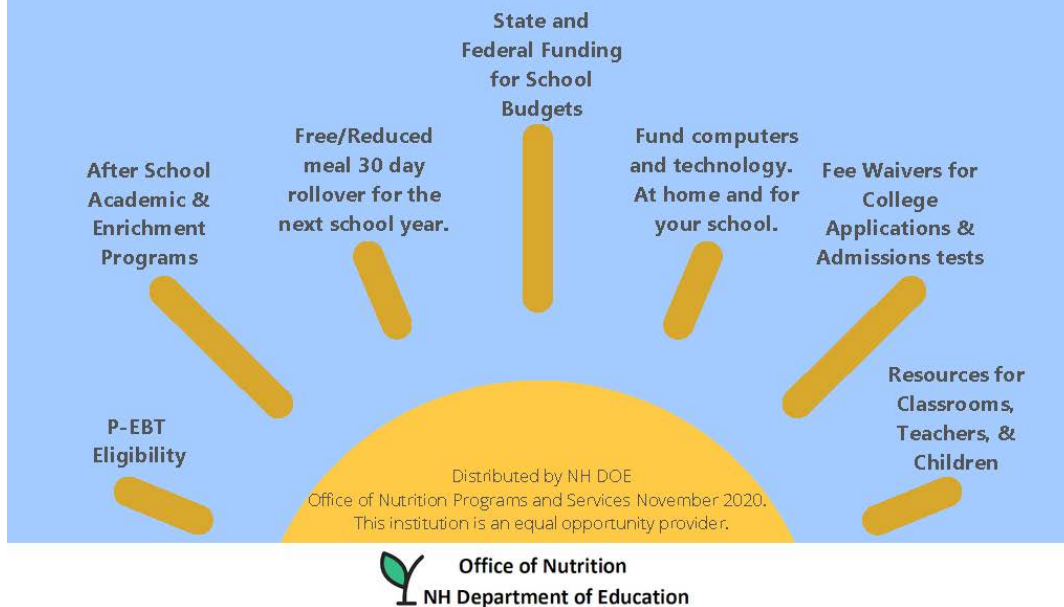
Even with free meals for your school district in 2020-2021, it is still important to submit a free/reduced price meal application.

Completing an application takes less than 10 minutes and application information remains private and confidential.  
Only one application per household is needed.

Meal Applications may be downloaded from your school's website or obtained from the district's food service director.

**DON'T DELAY! COMPLETE AND SUBMIT AN APPLICATION TODAY!**

## FILLING OUT THE SCHOOL MEAL APPLICATION MAY HELP PROVIDE:



Visit the [School Website](#) for Application



**City Hall will be Closed for the Christmas Holiday.**

**Thursday, December 24 &  
Friday, December 25**

**City Hall will also be Closed on Friday,  
January 1 for the New Year Holiday**

**Quality Service, Quality Schools, Quality Somersworth**  
**Vision 2020**

*"We Believe in Somersworth"*



*Proud Past, Bright Future*

---