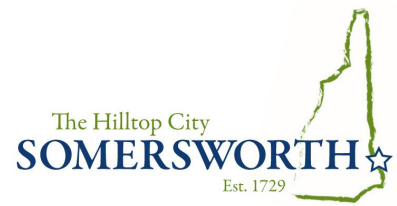


***November 2021***



**City of Somersworth**  
One Government Way  
Sommersworth, NH 03878  
(603) 692-4262

**City Hall Hours**  
**Monday-Friday**  
8:00 a.m. - 4:30 p.m.  
**Wednesday**  
8:00 a.m. - 6:00 p.m.

**City Council**  
**Meetings**



**Monday, November 15 at 7:00 p.m.**

**City Manager's Report for the City Council**  
**Meetings available [Here](#)**

**Committee/Board Meetings this Month**

**Site Review Technical Committee**  
Wednesday, November 3 at 10:30 a.m.  
Wednesday, November 10 at 10:30 a.m.

**Minor Site Planning**  
Wednesday, November 10 at 1:00 p.m.

**Conservation Committee**  
Wednesday, November 10 at 6:00 p.m.

**School Board Meetings**  
Tuesday, November 9 at 7:00 p.m.  
Tuesday, November 23 at 7:00 p.m.

**Planning Board**  
Wednesday, November 17 at 6:30 p.m.

**Historic District Commission**  
Wednesday, November 23 at 7:00 p.m.

**Visit our Website**



**Missed the Meeting?**  
**Catch it again Online**

Don't forget: If you missed the live City Council, School Board or Planning Board meetings on Channels 22, you can catch them again, online and on demand.

Simply **watch Somersworth** to begin watching meetings on demand.

**November 2 Municipal Election Information**

The City of Somersworth Municipal Election will be held on Tuesday, November 2, 2021. Voters from all Wards will



elect the Mayor, City Councilors, and School Board members.

All elected positions are two-year terms.

## **November 2 - Election Day**

**8:00 a.m. - 7:00 p.m.**

### **The Polling Locations are:**

Ward 1 - City Hall, One Government Way

Ward 2 - Summersworth Historical Museum, 157 Main Street

Ward 3 - Somersworth High School Cafeteria, 11 Memorial Drive

Ward 4 - Idlehurst Elementary School Cafeteria, 45 Stackpole Road

Ward 5 - Romeo J. Messier Building, 218 Main Street

If you have any questions please contact the City Clerk's Office at 692-9511 or 692-9512 or email Jonathan Slaven, City Clerk at [jslaven@somersworth.com](mailto:jslaven@somersworth.com) or Ammy Ramsey, Deputy City Clerk at [aramsey@somersworth.com](mailto:aramsey@somersworth.com)



## **COAST to Offer Free Rides to the Polls on Municipal Election Day**

**Dover, NH** – COAST is honored to offer free rides to anyone on their way to vote on Municipal Election Day, Tuesday, November 2. As a reminder, masks are required on all COAST vehicles.

While the COAST public transit system does not provide transportation to each individual polling station directly, their hope is to encourage voters to get to the polls by eliminating the barrier of transportation costs.

All passengers need to do is tell their driver that they are on their way to vote, or on the way back from voting, and they will not be charged for the ride.

Not sure where your polling place is? The Secretary of State's website can help you find it - <https://app.sos.nh.gov/Public/PollingPlaceSearch.aspx>

ADA, Route 7 On-Demand, and Portsmouth Senior Transportation Clients: Please call TripLink for details 603-834-6010. Should we have capacity constraints for trips to the polls on these specific services, we may offer alternative travel times throughout the day.



## **The Mayor's Corner**

**Turn Right, or Turn Left?**

**Last year I printed this essay after the Federal Elections. With the Local Elections now upon us, I found it pertinent to re-print with some new added context.**

Life is a series of direction changes. Each day we bombard ourselves with a series of choices, choices that affect not only the direction we continue in but also the direction of those around us. At any moment, we are in constant motion to process the information presented before us. Our experiences, training, education, understanding of self and others comprise the decisions we make and the outcomes. While most strive to navigate the maze of life and professional surroundings as independent persons, we are linked together as interdependent beings. We are nurtured, educated, and conditioned to believe that the choices we make are ours alone. The goals we structure are linked to interdependent choices and influence from others. Our friends, colleagues, and the communities we choose to settle in are bound by interdependent connections.

### **Turn Right or Turn Left?**

While on the surface making a choice in one direction sounds simplistic, it is layered in the level of complexity. The end goal, your motives, the motives of others, the short term and long, affect your community and other communities connected with you. Each one of these factors are individual particles that comprise the end structure of the moment of choice. These particles form the moment when a choice is made, and a decision finalized. To know oneself, gains an understanding of one's strengths, weaknesses, assets, and one's liabilities. These will ensure the choices are beneficial in the direction chosen. The interdependent link of us all requires us to gain an understanding of others. The team which we are part of, and our independent DNA gives us a positive or negative reaction to how one chooses to lead. With an understanding of self, and those who comprise our team, one can guide towards the center of comprise, where the needle of style will be center, and consensus can be reached.

### **Turn Right or Turn Left?**

These images and the outcome of choices have been consuming my thoughts since attending a virtual presentation by **Ty Gagne**, author of the book ***"Where You'll Find Me"*** guiding one through the adverse effects that choices had on mountaineer Kate Matrosova, leading to her early death during a winter hiking expedition in the New Hampshire Presidential range. The death of Kate Matrosova cannot be simplified and must be taken for face value, an accident that led to an untimely tragic death, leaving long-term effects upon everyone who was linked to her.

Each of us face the choice of turning right or left throughout our lives and careers. We will encounter unfavorable conditions, yet our ability to see clearly in the direction we must take may be comprised by a blizzard of internal and external factors. Our training, education, and knowledge of self and team, will be called upon now to make the decision of what direction to turn. Regardless of the direction, a negative or positive outcome will be achieved.

Now, more than ever our City, State and Nation need leaders who have an understanding of self and all others who comprise their team. A leader must acquire an understanding of not only where their strengths lie, but also what other styles are necessary to forge a cohesive leadership team which honors the diversity and complexity of any community.

We have also witnessed a deterioration in the practices of civility within our state and national systems over the last several years. As a community we must continue to be the guardians protecting our local government against the forces of those who wish to

entangle us into those same failed practices. Differences in interpretation and approaches should not be viewed as comprise or an attack on one's own style of leading. Instead, it should be honored as an asset in the multiplicity of approaches that can be offered and analyzed before a final decision is reached. While the final decision to turn right or turn left is in the hands of the one responsible, ensuring the directions were thoroughly reviewed.

Yes, life and governing are a series of choices; choices which are linked to our independent and interdependent relationships, experiences, and education. We will never avoid the choice of turning left or right and must be ready to not only make that decision but also be prepared for the consequences of our actions. A rainbow does not shine with a single color, nor does a true leader. A true leader is confident and comfortable with making the final choice, regardless of one's color. They are also aware that for the decision to be successful each color must be encompassed within their final decision. Placing barricades, roadblocks, suppressing other approaches, outlooks, and vision is not leadership but weakness. Those who can lead strive to understand who they are, utilize their assets and strengths, embrace their weaknesses, and honor the insight and complexities of oneself. They forge the diversity of color and blend them into a workable rainbow that illuminates the direction for others to follow.

### **Turn Right, Turn Left?**

As the month of November begins, and we prepare for our voices to be heard at the ballot box, we must assure that the leaders who we select listen to all voices in making the final decision of what direction our GREAT HILLTOP CITY WILL TURN. As a Community will we ***Turn Right, Turn Left*** or forge ***straight ahead?*** The choice is ours.

*Mayor Dana S. Hilliard*



### **Hello Friends,**

On **Wednesday, November 10 at 5:30**, please welcome Robert Goodby, Ph.D., for a talk titled *12,000 Years Ago in the Granite State*, focusing on the excavation of four Paleoindian house sites in Keene. This is the oldest housing site discovered in New England. In addition, Robert will discuss his book, *A Deep Presence: 13,000 years of Native American History*. His presentations receive rave reviews among NH Libraries.

**Tuesday, November 16 at 5:45**, let's talk about ***Miracle in the Andes: 72 days on the mountain and my long trek home*** by Nando Parrado. Peter Stark writes, "Nando Parrado's haunting experience in the Andes—grippingly, honestly, and insightfully told—ranks with the most dramatic survival stories of the last two centuries." John Krakauer states, "If you pick this book up, you will not be able to put it down." Either call or come in to place an interlibrary loan request.

October twenty-eighth was the last scheduled story time for the season, but stay tuned for Take-Home Story Time Activity Kits. They will include bean bags, egg shakers, scarves and

a guide sheet with suggested songs and activities. Patrons can find books and a craft to go along with each week's theme in the children's room. In addition, the library has 5 themed kits that include books, puppets, games and activities that you can check out. Just ask at the circulation desk. Go to our Facebook page or the children's program page for more information <https://www.somersworth.com/somersworth-public-library/pages/childrens-programs>.

The Library has reduced-rate passes for:

- Currier Museum of Art (Manchester, NH)
- Children's Museum (Dover, NH)
- New England Aquarium (Boston, MA)
- Seacoast Science Center (Rye, NH)
- Strawberry Banke Museum (Portsmouth, NH)

Take advantage of the Museum of Science in Boston through the end of November: the pass will not be renewed. Call the library to reserve a date then call the museum to reserve a time.

The Library will be closed Thanksgiving and the day after but open Saturday, November 27. To all celebrating the beginning of Hanukkah November 28, Chag Sameach!

For early planning purposes, Wednesday, December 15 at 5:00 will bring Jeff Warner performing *Range the Wild Woods Over: Loggers' Songs and Stories*. To get you truly in the spirit, two crock pots of beans will be made; one vegan and one meat-full. Accompanying this protein and fiber-rich tastiness, will be cornbread. To encourage distancing, seating will be on all three levels.

Want to see what's new in books and movies? Go here

<https://somersworth.nhais.bywatersolutions.com/> and click New Fiction, New Non-fiction or New Movies. We can show you how to log in and place holds. It's easy, we promise.

Come see us soon!

### **Library Fall & Winter Hours**

Our hours are changing slightly to accommodate times of higher use.

**Starting Saturday, October 2 the Library Hours are as follows:**

Tuesday & Wednesday: 10:00 a.m. - 7:00 p.m.

Thursday & Friday: 9:00 a.m. - 5:00 p.m.

Saturday: 9:00 a.m. - 3:00 p.m.

For the latest updates, follow our Facebook page. You can also check our Programs & Services page. <https://www.somersworth.com/somersworth-public-library/pages/library-services-programs>. Stay tuned for an author visit in November...

**Here's to more time to do the things you like.**

**Happy November!**

---

**Happy Halloween (Date Change)**

**Trick or Treating in Somersworth will be this Sunday, October 31**



5:30 p.m. - 8:00 p.m.

This date change is due to inclement weather on Saturday



## Somersworth Recreation Upcoming Events

SOMERSWORTH RECREATION

# Flashlight Candy Cane Hunt

Ages 3-12/ Somersworth residents only  
Pre-registration is required to attend  
Friday, December 3rd  
Millennium Park

Hunt begins at 5:30 pm sharp!  
Space is limited, don't wait to register!

Free!



Bring your flashlight & a bag to help collect the candy canes nestled throughout the park. Once Santa arrives by fire truck he will get the candy cane hunt started. Families will have a chance to get a photo with Santa. Light refreshments will be provided. Supplies are limited. All children must be accompanied by an adult.

To pre-register please visit our website:

[www.somersworth.com/parks-recreation/pages/special-events](http://www.somersworth.com/parks-recreation/pages/special-events)

# SOMERSWORTH RECREATION YOUTH BASKETBALL



Children in grades 1-6  
Saturday Mornings- 7 sessions  
January 8- February 19

*\*2022 Skills & Drills only*

*\*Masks will be required at all times for all players, coaches, & spectators*

*\*Times, locations, & policies are subject to change*

## IDLEHURST ELEMENTARY SCHOOL GYM:

8:00-8:50 am - 1st grade coed

9:00-9:50 am - 2nd grade coed

10:00-11:00 am - 3/4 grade girls

11:00-12:15 pm- 5/6 grade girls

SPACE IS LIMITED!  
DON'T WAIT TO  
REGISTER!



## MIDDLE SCHOOL GYM:

8:30-9:45 am - 3/4 grade boys

10:00-11:15 am - 5/6 grade boys



Join us for this 7-week instructional Rec Basketball program designed to teach players the fundamentals of basketball. This program emphasizes skill development and sportsmanship through age appropriate drills and fun games. All playing abilities are welcome!

**DEADLINE TO REGISTER IS Dec. 17th**

**\*\*Open to Somersworth residents only**

**Early Bird Fee~**

Register & pay by Nov. 30th

**\$45**



**Fee~**

After Nov. 30th

**\$60**

## **VOLUNTEER COACHES NEEDED!**

**\*\*Now seeking volunteer coaches to run the program! We can't run this program without the help of several volunteers. Please reach out to the Rec Office if you can coach this season. 603-692-9508**

**Flashlight Candy Cane Hunt-** pre-registration is required this year. Space is limited, don't wait to register!

**Recreation Youth Basketball flyer-** space is limited, don't wait to register!  
Calling all volunteers, we need your help! We're seeking volunteer coaches & gym attendants to help run the program. Please contact the Recreation Office if you can help us out this season. (603) 692-9508

Visit our website to Pre-register:

<https://www.somersworth.com/parks-recreation/pages/special-events>



## Department of Public Works & Utilities



### Residential Solid Waste and Recycling Collection Services -7 a.m. set outs:

Residents are asked to set out trash bags and recycling bins during their weekly collections **no later than 7 a.m. on the day of collection**. The City's contractor WMI follows the Solid Waste Ordinance which states:

**Residents will place their rubbish to be collected along the curbside or street-side where normally the curbing would be, in specially marked bags as defined in Section 7.1 of the Code, on the evening before, or by 7:00 a.m. on their scheduled pickup day. No rubbish will be picked up that is not contained by an approved specially marked bag that is not along the curbside, nor more frequently than once a week for any person, firm or corporation.**

**THERE WILL BE NO DELAY IN TRASH/RECYCLING COLLECTIONS IN NOVEMBER FOR VETERAN'S DAY, THURSDAY, NOVEMBER 11<sup>TH</sup> OR THANKSGIVING, THURSDAY, NOVEMBER 25<sup>TH</sup>.**

### Non- Metal Bulky Waste Disposal: Please get "Bulky Waste" Stickers

All non-metal bulky waste items require "Bulky Waste" Stickers. These stickers cost \$4.00/per 50lbs and can be purchased using cash, check, or credit/debit cards at City Hall or at the Department of Public Works, **checks only**. Non-Metal Bulky items will be collected by Waste Management and must be placed curbside by 7:00 a.m. on your normal trash collection day with the appropriate amount of Bulky Waste Stickers visible to the Waste Management driver.

**Residents are reminded that items set out for collection without Bulky Waste Stickers will not be collected and are subject to code violations for a property non-compliance.**

### Metal Pick-up

The Department of Public Works reminds residents that metal pick up occurs on the 2nd Tuesday of the month. The November collection will occur on Tuesday, November 9. Residents wanting this service are asked to call Public Works **no later than 3:00 pm on Monday, November 8** to be placed on the pickup schedule for November. Participants are reminded to place the proper number of tags on the item when setting the item out on the street for collection. Typical TV's require three (3) stickers - \$12.00 and PC's require one (1) sticker - \$4.00. Residents may also opt to drop off metal and electronic items with proper bulky waste stickers at the Public Works Facility located at 18 Lilac Lane from 7:30 a.m.- 2:30 p.m. Monday –Friday.

### Brush and Bagged Leaves Collection

Public Works Highway crews will start collecting residential brush during the week of November 15th through 19th. **Residents need to call Public Works at 692-4266 by Friday, November 12 to be placed on the pick-up list.** Please note, brush can be up to five (5) inches in diameter and ten (10) feet long.

Department Highway crews will also be collecting bagged leaves the week of November 22 through 24. Residents do not need to call to be put on a list for this service. Bagged leaves should be placed curbside on your regular trash pick-up day, no later than 7 a.m. The paper leaf bags can be purchased at grocery store chains, hardware stores, and Home Depot.

### **Malley Farm**

Reminder that the Malley Farm brush and leaf pile will remain open through the Fall and early Winter as long as the weather conditions permit. Typically, Malley Farm will close after the first major snow event in the City. Hours of operation are: Monday - Friday 7:30 a.m. to 2:30 p.m. Saturday & Sunday 8:00 a.m. - 6:00 p.m.

### **Cemetery Road Reconstruction Plan**

SUR is continuing the reconstruction of Cemetery Road and making substantial progress. New Water and Sewer mains have been installed and the new drainage piping and catch basins are being installed. Base pavement along most of Cemetery Road has been completed; remaining pavement will be installed over the next few weeks. Remaining sidewalk and curbing detail work will occur this spring. Final pavement surface over the entire street will occur this spring 2022 as well. In addition, this project will repave the access road behind the Somersworth High School, Career Technical Center and Middle School this spring.



*Cemetery Road Project*

### **Driveway, Obstruction & Trench Opening Permit Reminder-Winter Moratorium takes effect November 15-April 15.**

As a reminder, any work done within the City Right-Of-Way requires a permit. Examples include resurfacing or rebuilding your driveway, with a new driveway apron connecting to the streets, street openings for utility connections and if occupying a street or sidewalk with staging or roll- off for debris removal /property repairs. The annual winter moratorium is not too far off and takes effect from November 15-April 15; prohibiting any excavating or work in the ROW during this period. If you have questions on the work you intend to complete within the Right-Of-Way, please call the Public Works Department at 692-4266. Permit applications can be located at the City website on the Public Works & Utilities Engineering page. [www.somersworth.com](http://www.somersworth.com)

### **Prepare for this Winter, Sign up to Receive City Alerts and Emergency Notices about Parking Bans, Closures.**

Residents that have not yet signed up to receive City of Somersworth alerts and notices about winter related parking bans, traffic delays due to construction, water main breaks, or City facility closures are encouraged to sign up to receive text or emails by registering at [www.somersworth.com](http://www.somersworth.com). If you know residents or your neighbors that have not done so, please encourage them to sign up. The information received is very helpful. Click on **Subscribe to E-alerts** and follow the steps to complete your subscription.

Any questions or need for additional information can be addressed by calling Michael Bobinsky, Director of Public Works & Utilities at 603-692-4266 or email



## **RAKE IT, LEAVE IT OR REMOVE IT**

*What to do with  
your leaves, grass  
clippings and yard  
waste?*

## **WHY DOES IT MATTER?**

*You Choose - your leaves and grass clippings can be a  
valuable resource OR a source of water pollution.*

### **AS A RESOURCE .....**

Mulched leaves or grass clippings on your lawn add valuable nutrients and organic matter.

Composting leaves and grass clippings saves money.

### **AS A SOURCE OF POLLUTION .....**

Decaying leaves and grass kill critters in streams, rivers, lakes, ponds, and wetlands.

Yard waste dumped near waterbodies and wetlands contributes to stream algae and odors.

**Yard waste and grass clippings can be disposed of at  
the Malley Farm Facility, at Malley Farm Road**

## **DIY Halloween Scarecrow**

**Use your yard waste to stuff your scarecrow!**



### **Materials:**

- Twine
- Scissors
- Old boots
- Straw hat
- Yard stick
- Old pillow case
- Old pants/overalls
- 5 gallon paint stick
- Yard waste/grass clippings
- Old long sleeve shirt/flannel

For this DIY, follow this link:  
<https://thd.co/3muiHw1>



### **Directions:**

1. Create backbone/shoulders by placing the yard stick vertically on a flat surface and centering the paint stick horizontally at the 8 inch mark. Secure with twine.

2. Dress and stuff your scarecrow. Begin with the shirt and tuck it into the pants or overalls. Stuff the scarecrow with your yard waste scraps and supplement if needed with straw. Tie the sleeves and pant legs with twine.

3. (Optional) Draw a face on the pillow case in permanent marker. Wrap the pillow case around the top of the yard stick, stuff, and tie together with twine. Top with the straw hat, give your scarecrow their boots, and display outside.

Dumping yard waste in our local waterbodies is detrimental to our environment. Protect our waters by either composting it, leaving grass clippings on your lawn for a natural fertilizer, or bringing it to a place that can mulch it.



# DIY Falling Leaves Mobile

Use fallen leaves to create a mobile!

For this DIY, follow this link:  
<https://bit.ly/3uRRfvP>

## Materials:

- Twine
- Scissors
- 8 pinecones
- Hot glue gun
- Embroidery hoop
- Leaves with intact stems
- 8, 3-foot long waxed strings



## Directions:

1. Collect leaves with intact stems and press in a heavy book for a few days.

2. Wrap twine around the embroidery hoop, securing the ends with hot glue.

3. Tie the 8, 3-foot long waxed strings at even intervals around the hoop.

4. Attach pinecones to the bottom of the waxed strings to act as weights.

5. Knot the string around each stem, creating randomized spacing.

6. Secure the hoop to a ceiling hook using twine.

Dumping yard waste in our local waterbodies is detrimental to our environment. Protect our waters by either composting it, leaving grass clippings on your lawn for a natural fertilizer, or bringing it to a place that can mulch it.



## Somersworth Fire Department & Emergency Management

### A Safety Message from the Fire Chief's Office

#### Somersworth Fire Department & Emergency Management

#### A Monthly Update and Safety Message from the Fire Chief's Office Veteran's Day and Carbon Monoxide Awareness Month

On the 11<sup>th</sup> hour, of the 11<sup>th</sup> day, in the 11<sup>th</sup> month of 1918, the armistice between the allied powers and Germany went into effect ending "the war to end all wars". Over the years, recognition of the armistice ending WW I has evolved into the national holiday that we now know as Veteran's Day.

On Thursday, 11 November we pause to remember and thank all veterans for their sacrifices and commitment to the defense of freedom including Somersworth Fire Department personnel Lt Mathew Moore (USN), Lt Michael Spinney (USAF), Lt Tyler Taatjes (USAF), FF William Staples (USN), and FF Brian Flood (USMC).

The presence of veterans across the Fire Service in the United States has been prevalent since the military demobilization following WW II. This enduring presence has strengthened the Fire Service by reinforcing a command system, emphasizing standards and training, and focusing on mission accomplishment where "failure is not an option". Our most important activity is responding to emergencies and calls for service today while our second most important activity is preparing to respond tomorrow. Consistent with our vision know that your Somersworth Fire Department is always ready, constantly improving, and ever vigilant.



## **Carbon Monoxide Awareness Month**

Carbon monoxide (CO) is a colorless and odorless gas that is produced as a byproduct of incomplete combustion of wood and fossil fuels (charcoal, heating oil, propane, natural gas, etc.). CO is also present in the exhaust of diesel and gasoline powered engines. According to the Journal of the American Medical Association, CO poisoning is the number one cause of accidental poisoning in the United States and is responsible for an average of 450 deaths each year. To guard against CO, have your chimney and furnace/boiler serviced on a regular basis. In addition, if there is an electrical power failure, don't move your grill or inside or use other unauthorized heated devices to keep warm. Place a portable generator well away from the house, not in the garage, or in a breezeway, or on the deck.

With CO being colorless and odorless, medical signs and symptoms often appear when it is too late and can mimic other conditions including nausea, headaches, dizziness, weakness, chest pain and vomiting. In more severe poisoning cases, people may experience disorientation or unconsciousness, or suffer long-term neurological disabilities, cardio respiratory failure, or death.

Consequently, a properly placed and maintained CO detector/alarm is an absolute necessity. For details on CO alarm placement and other CO considerations, see the CO Safety sheet that follows.

In the event of a CO alarm activation, move all occupants to fresh air and call 9-1-1. Please do not call the business line to the Somersworth Fire Department. The 9-1-1 call centers are staffed 24/7/365.

Call the Fire Station if you have questions about any emergency management, fire prevention, or life safety topics.

Enjoy the fall, be careful, and look out for each other.

George Kramlinger, Fire Chief  
Emergency Management Director

# Carbon Monoxide Safety



Often called the invisible killer, carbon monoxide is an invisible, odorless, colorless gas created when fuels (such as gasoline, wood, coal, natural gas, propane, oil, and methane) burn incompletely. In the home, heating and cooking equipment that burn fuel can be sources of carbon monoxide.

- CO alarms should be installed in a central location outside each sleeping area and on every level of the home and in other locations where required by applicable laws, codes or standards. For the best protection, interconnect all CO alarms throughout the home. When one sounds, they all sound.
- Follow the manufacturer's instructions for placement and mounting height.
- Choose a CO alarm that is listed by a qualified testing laboratory.
- Call your local fire department's non-emergency number to find out what number to call if the CO alarm sounds.
- Test CO alarms at least once a month; replace them according to the manufacturer's instructions.
- If the audible trouble signal sounds, check for low batteries. If the battery is low, replace it. If it still sounds, call the fire department.
- If the CO alarm sounds, immediately move to a fresh air location outdoors or by an open window or door. Make sure everyone inside the home is accounted for. Call for help from a fresh air location and stay there until emergency personnel declare that it is safe to re-enter the home.
- If you need to warm a vehicle, remove it from the garage immediately after starting it. Do not run a vehicle or other fueled engine or motor indoors, even if garage doors are open. Make sure the exhaust pipe of a running vehicle is not covered with snow.
- During and after a snowstorm, make sure vents for the dryer, furnace, stove, and fireplace are clear of snow build-up.
- A generator should be used in a well-ventilated location outdoors away from windows, doors and vent openings.
- Gas or charcoal grills can produce CO — only use outside.

## HOME HEATING EQUIPMENT



Have fuel-burning heating equipment and chimneys inspected by a professional every year before cold weather sets in. When using a fireplace, open the flue for adequate ventilation. Never use your oven to heat your home.

## FACTS

- ! A person can be poisoned by a small amount of CO over a longer period of time or by a large amount of CO over a shorter amount of time.
- ! In 2010, U.S. fire departments responded to an estimated 80,100 non-fire CO incidents in which carbon monoxide was found, or an average of nine calls per hour.



**NATIONAL FIRE PROTECTION ASSOCIATION**  
The leading information and knowledge resource on fire, electrical and related hazards







## Thanksgiving is one of the largest get-togethers in the US

*follow these safety tips to keep your friends and family safe:*

- Be sure **electric cords are not dangling** off the counter within easy reach of children or pets.
- **Keep the floor clear** of kids, toys, pets, bags, etc., so you don't trip while carrying hot food or liquids.
- Stay with your food in the kitchen while you're cooking. Stove fires start when we become distracted! —**"When You Cook, Stay and Look!"**
- Kids should stay **3 feet away** from the stove.
- Use the **back burners** when cooking, and **turn pot/pan handles towards the back** where little hands can't reach.



FF/AEMT Jesse McMahon (pictured 3<sup>rd</sup> from the left) completes 12 months of probation and receives his helmet shield with his unique number. Probation in the City of Somersworth Fire Department is a challenging 12 months with intense studying, equipment proficiency, practical evolutions,



The theme for this year's Fire Prevention week was "learn the sounds of fire safety". From beeps to chirps, this year's fire safety theme was focused on better educating the public about the sounds smoke alarms make, what those sounds mean, and how to respond to them. To further that theme,

and driver operator training. The other members of the shift as well as the entire Department play a vital role in a new firefighter successfully completing probation. D-Shift pictured left to right: FF/EMT DeVanaey, Lt/EMT Taatjes, FF/AEMT McMahon, and FF/EMT Toof

FF/AEMT Jesse McMahon created the character of "Smokie Detectoresen" to teach children about the sounds a smoke alarm makes and what to do in various situations. Shown here, Smokie along with his trusty assistant FF Spenser (FF/EMT Spenser Barnes), prepare to give the presentation at the Celebrate Somersworth block party. Throughout the month of October and into November, Smokie will visit the K through 3rd grade at Idlehurst and Maplewood Elementary Schools.



### October was Breast Cancer Awareness Month

The **pink ribbon** is a universal symbol that represents fear of breast cancer, hope for the future, and the charitable goodness of people and organizations that publicly support the breast cancer movement. We are proud to have changed our uniform patches to show our support.



### Beards for Bucks -Razorless for a Reason

To raise money for Strafford County Child Advocacy Center (CAC) and the Granite State Children's Alliance, Somersworth Police officers will be growing beards through the month of October. Participating officers donate a registration fee to wear facial hair throughout the month while encouraging public donations. The CAC and Granite State Children's Alliance help child victims of physical and sexual abuse and their families that requires an approach that addresses the physical, emotional and legal dimensions of abuse. It requires a coordinated victim centered response from expert professionals to reduce stress throughout the investigation and intervention process. Child Advocacy Centers work in partnership with all the necessary agencies and specialists to coordinate a plan of action to provide high-quality, specialized services for abused children and their families to heal, survive and thrive.

**PROTECT YOUR  
EVERY DAY**

If you **see** something,  
**say** something™

**REPORT SUSPICIOUS ACTIVITY**

**Call 9-1-1**

Somersworth Police Dispatch  
Somersworth Police Crime Line

603-692-3131  
603-692-9111



"If you see something, say something" used with permission of the NH State Police Transportation Authority.





## **Celebrate Somersworth with Somersworth First Responders**

Our First Responders (Somersworth Police, Somersworth Fire and Stewart's Ambulance Service) and Chandler's Automotive and Towing were on hand October 9<sup>th</sup> at the Somersworth High School for **Celebrate Somersworth!** There was free food and games, police helicopter and lots of First Responders. Fireworks capped a fun evening sponsored by Somersworth Police Association and the Festival Association.

### **Drug Take Back Day**

We had a very successful Drug Take Back Day on Saturday, October 23<sup>rd</sup>. If you missed Drug Take Back Day, we have a 24-hour secured Drop Box in our lobby at the Police Station. You can dispose of unused or expired medication any time of the day or night utilizing this Drop Box.

## **SNOW EMERGENCY PARKING**

### **Permits for Noble Street and River Street parking during snow emergency parking bans are now available**

On January 7th, 2019, the Somersworth City Council passed Ordinance No. 9-19 to allow permit parking during snow emergency parking bans on Noble Street adjacent to the Noble Pines Park, and on River Street adjacent to Jules Bisson Park.

Permits to park there during parking bans resulting from a snow emergency are available from November 1st thru March 31 at a rate of \$20.00 per month, and are available at the Police Department.

There are 17 spaces available on Noble Street and 5 spaces available on River Street. Permits will be issued on a first come, first served basis. The permits are only valid during the dates listed when there is a snow emergency parking ban in effect.

Vehicles parked in this area with a valid permit must be moved by 8 am on the day following the completion of the parking ban to allow for snow removal from the designated area. Vehicles not moved per the Ordinance will be subject to being towed at the owner's expense.

## **SUBSTANCE MISUSE ASSISTANCE**

We have a partnered with Avis Goodwin, Wentworth Douglass Hospital and volunteer Recovery Coaches to offer **"Community Access to Recovery"** aimed at providing help to those suffering from misuse disorders. Simply come into the Police Station and ask for assistance. We will arrange assistance for you.



Somersworth Police Department also uses our [Facebook page](#) to give update on important Community information including crime information, road closures, snow emergencies, parking bans and Community events.

We also send out Nixle alerts for parking bans and other important



### Monarch Butterfly Pledge Updates

The Office of Mayor Dana Hilliard, Somersworth Youth Connection (SYC) Director Maureen Jackman and City Councilor Matt Gerding announce a Free Seed Packet Giveaway as part of the Community Monarch Butterfly Pledge. **SYC will be hosting a Free Seed Packet Giveaway**

**beginning the week of October 25, you only have 2 more days this week to pick up your free seed packet.**

You may pick up your free seeds at the following locations; Somersworth Recreation Department, Department of Public Works and the Somersworth Public Library. There is a limit of 5 per family.

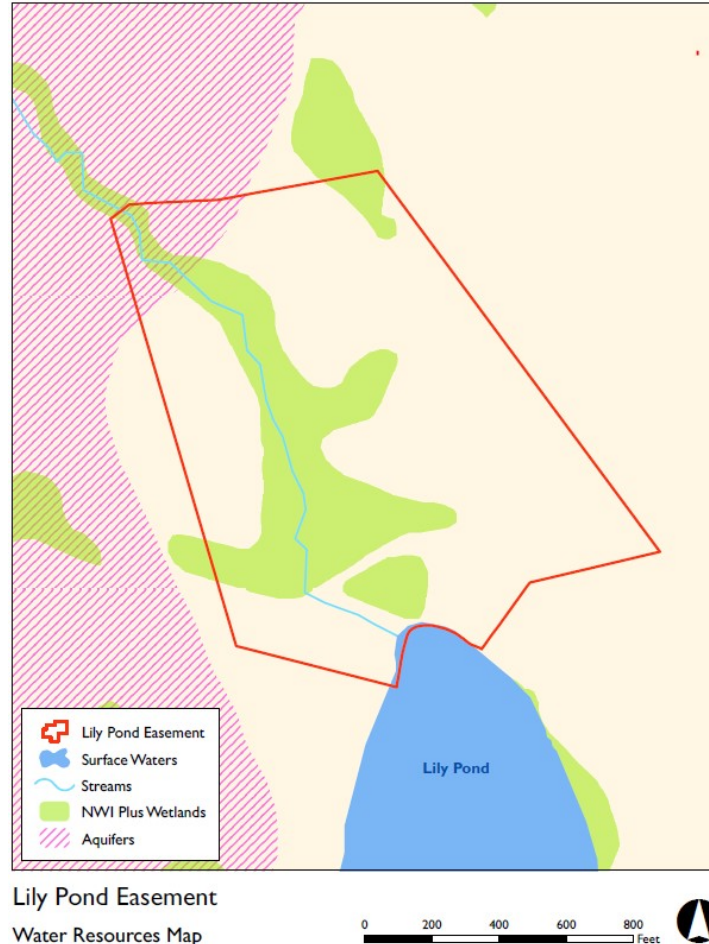
SYC students have filled over 970 packets with a mix of Monarch friendly seeds such as Milkweed, Coneflower, Lupine, Black-eyed Susan, Coreopsis, Aster, Indian Blanket, Cornflower, and Daisy among some others. These will make a nice addition to your garden or in creating your own Monarch Butterfly Garden.

You may learn more about the National Wildlife Federation Mayors Monarch Butterfly Pledge at <https://nwf.org/mayorsmonarchpledge>

## Somersworth Conservation Commission What's Happening

### Conservation Land at Lily Pond

The Conservation Commission and Planning Department finalized the purchase and conservation of 48.37 acres of land along Coles Brook, extending north from Lily Pond to already conserved land adjacent to the Oaks golf course. Much thanks to all involved, including but not limited to the Planning Office, the Finance Department, former Planning Director Shanna Saunders, former Conservation Commission Treasurers Sarah McGraw-Small and Larry Hamilton, and to the sellers – Georgiana Roberts Maher and Anthony Kurlovich, for their flexibility and patience with the process.



This property completes a wildlife corridor through the City and helps to fill in a larger corridor through the seacoast, identified by the Southeast Land Trust (SELT) as a priority for wildlife migration. Below is a copy and paste from our Natural Resources Assessment. Unfragmented conservation land in darker brown shows two developing corridors on the seacoast, coming into Somersworth through two directions – from Nottingham, Barrington, Dover and Rochester, and from Dover and Rollinsford. A political map is shown second for reference:

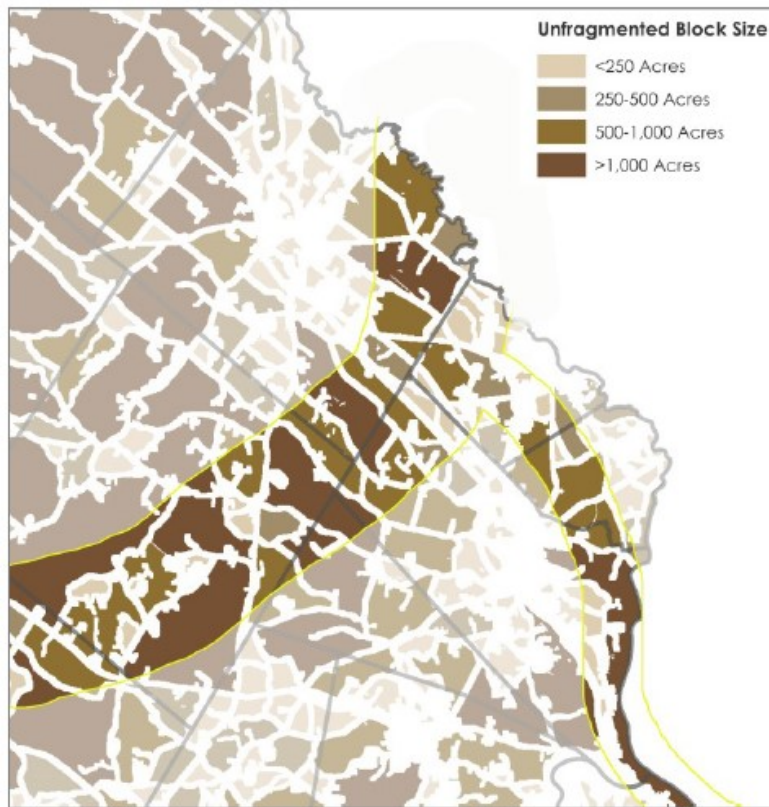
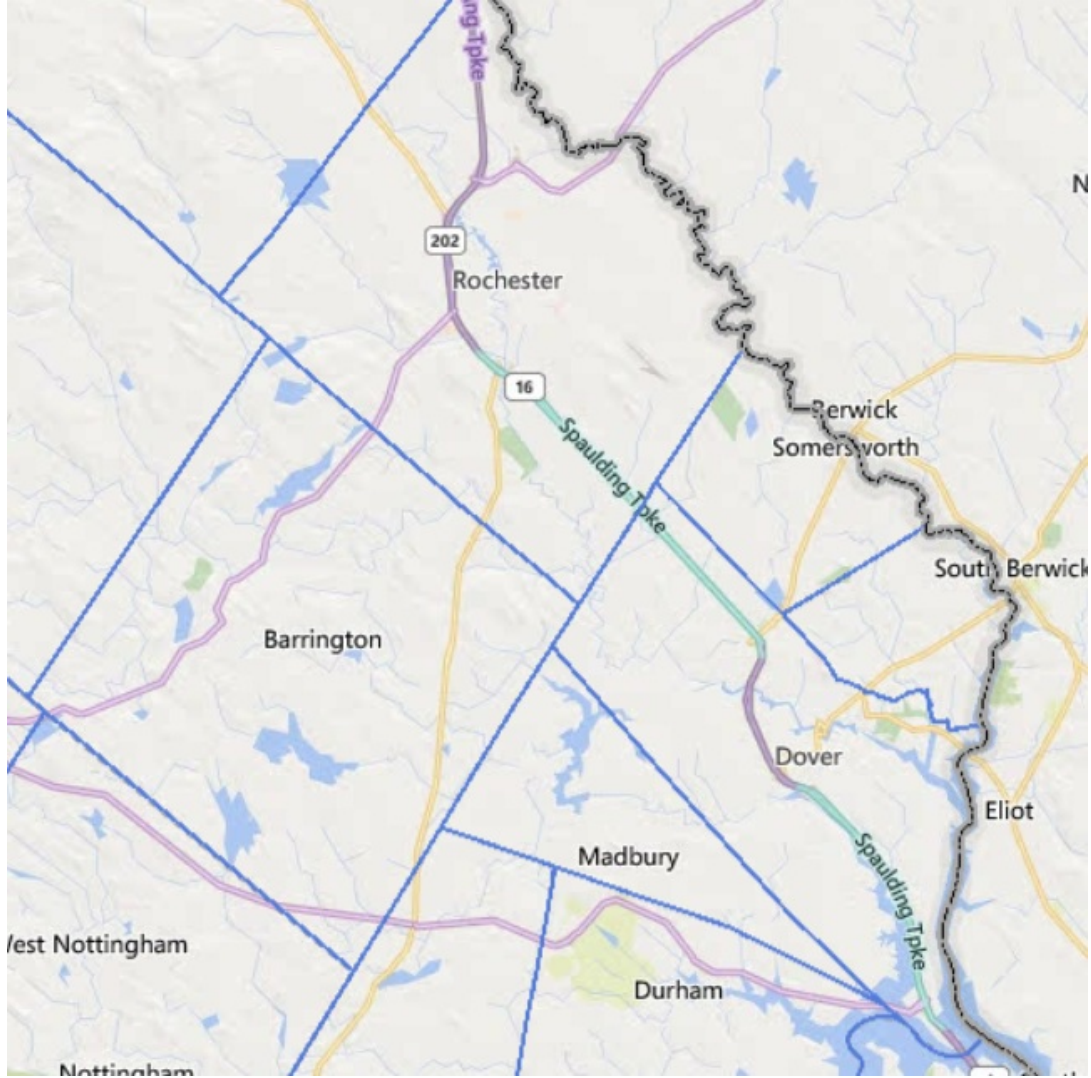
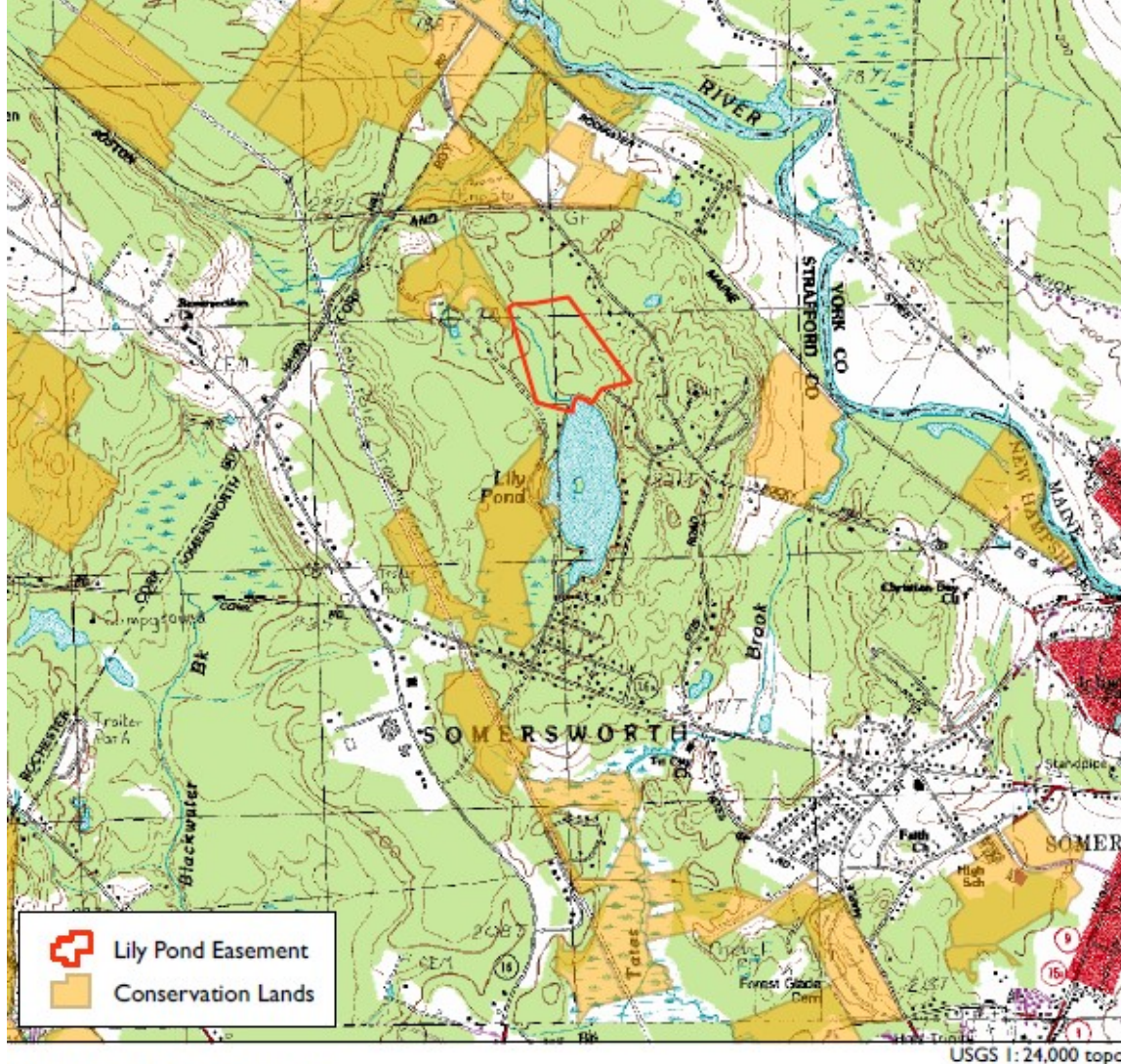


Figure 7. Corridors of unfragmented land can provide greater wildlife habitat than patches of unfragmented land and can meet the habitat need of species that require diverse habitat types or a larger range. Shown above are unfragmented blocks of land classified by block score, with higher score shown in darker shades. North-south and southwest-northeast corridors are highlighted.





The wetland and the brook are strategic to protecting a City wellhead, as well as the water entering the Salmon Falls River, upstream of our drinking water intake. Coles Brook ultimately empties into the river at the also recently conserved Mast Point Dam land:



## Lily Pond Easement

Topographic Map with Conservation Lands

0 0.2 0.4 0.6 0.8 Miles



The project began in early 2019, when Anthony Kurlovich and Georgianna Roberts Maher put two parcels on the market. They agreed to readjust their two parcels in a way that protected the wetland, brook and habitat.

The City received two grants: the Great Bay Resource Protection Partnership Land Protection Transaction Grant, and the New Hampshire Department of Environmental Services (DES) Drinking Water and Groundwater Trust Fund Source Water Protection Grant.

The Conservation Commission provided the matching funds. The property's purpose is for the protection of drinking water and wildlife. Activities are limited, per the deed. There are no official trails. Motorized vehicles are prohibited. Hunting is allowed. Complete information about public use is available at the Planning office.

If you would like more information please email Sarah Eckstein at [sarahmeckstein@gmail.com](mailto:sarahmeckstein@gmail.com)

## Somersworth Schools Eat Locally

October was National Farm to School month, and our schools celebrated with local foods!





On October 21 all Somersworth Middle and High school students and staff were treated to a very special, locally sourced lunch in our cafeterias. On October 28, all in the Idlehurst and Maple Wood School community were as well. Funded by our \$96,000 USDA Farm to School Grant, this meal hit the mark on increasing access to local foods in our schools, fueling healthy bodies, and feeding a healthy local economy.

What did Tracey and her amazing staff prepare? Delicious roasted chicken, local greens, root vegetables, and a tasty dessert made with local apples, procured through Three Rivers Farmers Alliance. <https://www.threeriverfa.com/> Three Rivers grows their own farm-raised produce, as well as facilitates the marketing, sale, and delivery of produce, meats, and other locally made food products from several farms in our region. In addition to wholesale, Three Rivers also provides a home-delivery service through their Veggie-Go program, contact-free and pandemic friendly.



Tracey Fitch, Director of  
Somersworth Food Service



Ivy Curran, 6 Grader at  
Somersworth Middle School

This school lunch was free of charge and available to all students and staff during school lunch blocks. It was a great opportunity to leave the lunch bag home, support our local food economy, and get to know the lovely folks who make and serve our school lunches every day. Big thanks to Tracey and her staff at Fresh Picks Cafe, our administrators and staff at all four of our schools who helped promote this event, and everyone who got school lunch that day. Finally, thank you to all the hard working farmers from Three Rivers, Heron Pond Farm, Two Farmers Farm, Stout Oak Farm, and Brookdale Farm, who grew the amazing food we ate all right here in NH and nearby Maine. Eating locally is good for the environment, good for our local economy, and good for your body!

Wendy Berkeley  
Somersworth Farm to School Coordinator



## Friends of Forest Glade Cemetery

### **Cora Stickney Harper by Mark B. Richardson**

This past October 11th, a group of women from the Exeter Chapter of the National Society of the Daughter of the American Revolution visited our Forest Glade Cemetery to clean the tombstones of Cora Stickney Harper and her parents Joseph and Arsenate White Stickney. The work they did was in conjunction with their sister organization, the Cora Stickney Harper Chapter of the National Society of the Daughters of the American Revolution, located in Fort Pierce, Florida. The women came to Forest Glade Cemetery to honor the woman who founded the Florida chapter back in 1914. You might recognize the name of Joseph A. Stickney, who was the Somersworth Banker murdered April 16, 1897 by Joseph E. Kelley, while Mr. Kelley was engaged in a one man daytime bank robbery of the Great Falls National Bank, but that's another story. So, who was Cora Stickney Harper?

By all accounts, Cora was born in 1859 and raised in Somersworth in house on the Hill. As the Stickney's only child, she attended Somersworth schools, but upon her graduation, she had bigger plans and furthered her education at Wellesley College, where she studied the arts, English and science. She graduated as her class Secretary, along with her friend Kathy Lee Bates, who became the author of "America the Beautiful." Cora was 21 years of age at the time, and had a bright future before her. It wasn't long before she became involved in the Women's Suffrage movement, organizing women to rally to the cause. When her mother passed away in 1895, Cora returned to Somersworth to be with her father, until his untimely death two years later. At the age of 38, Cora left Somersworth for the South, where her organizing capabilities flourished. She met and married Charles T. Harper, who worked as a railroad agent, in Savannah, Georgia, and they moved to Boynton Beach, Florida, where their only son was born. Unfortunately, young Charles died in his infancy. While in Boynton Beach, Cora also organized her first Women's Club for the express purpose of moving forward with Women's Suffrage.

In 1913, the couple moved to Fort Pierce where they built their home and remained. From Fort Pierce, she traveled, writing many letters, editorials and published articles about Women's Suffrage. She also founded her second Women's Club. With all her activism, she became interested in her family genealogy, in particular her ancestors of the American Revolution, of which there were many here in New Hampshire. As a result of her work in genealogy, in 1914, Cora became the founder, and first Regent, of the Aiseehatchee (meaning River of the Deep People) Chapter of the National Society of the Daughters of the American Revolution in Fort Pierce. Following Cora's passing, November 1, 1914, at the age of 55, it's most unfortunate she didn't live to see her cause of Women's Suffrage come to fruition, but her Aiseehatchee Chapter of the NSDAR became officially renamed in her honor as the Cora Stickney Harper Chapter of the National Society of the Daughters of the American Revolution.





The ladies of the Exeter Chapter NSDAR cleaning Cora's parent's tombstone. Photo by Michael Bobinsky, Director of Somersworth Public Works



Cora Stickney Harper's cleaned tombstone. Photo by Mark B. Richardson.

# PENNY SALE

**Sunday, November 21st  
Somersworth High School**

(Please note the date change. It was originally scheduled for November 14th.)

**Doors open at 11 a.m.  
Drawings start at 3 p.m.**

*Face Masks are Required*

We are so excited to be able to have our Penny Sale back at Somersworth High School! There will be lots of raffle items in the gym, as usual. The larger items and series raffles will be in the cafeteria. Food will be available to purchase.

Many people will want to stay for the day and watch the raffle live. However, if you prefer to watch the main raffle from the comfort of your home, we will be posting it on Facebook Live. You don't have to be present to win.



# Holiday Craft Fair

Saturday, December 4th  
9:00 am to 3:00 pm

Somersworth High School  
11 Memorial Drive, Somersworth

**150 talented crafters!**

**Food! Great raffles!**

**Free parking Free entry**

*Face Masks Required*



*This event is being hosted by the Somersworth Festival Association.  
Proceeds from the craft fair help support all of the events  
the SFA holds for the children.*

Phone: 603-692-5869 • Email: sfachild.festival@gmail.com

GREATER SEACOAST COMMUNITY HEALTH

**Goodwin**  
Community Health

**Families**  
First

**Lilac City**  
Pediatrics

**Families First, please sign up for their Newsletters**

**Family Focus: Info on each month's parent and family programs, monthly parenting tips and ideas, useful links**

**and more.**



**Family Supports for Recovery** is a new private Facebook group for family members with a loved one in recovery. SOS Recovery Community is offering this group to provide a safe place to ask questions, share ideas, learn about resources and get support.

If you have any questions or want more information, please **contact SOS** today.

**Have You Thought About Home Visiting?** Our Communities offer many different programs to support children and families, but sometimes it is hard to make sense of it all, and to find the right resource to meet your family's needs. This is where our Home Visitors can help.

Call us to learn more about this free, confidential program to strengthen your family and help you and your children thrive. Individual meetings take place at our locations in Portsmouth and Somersworth, or virtually. Call **(603) 422-8209**.



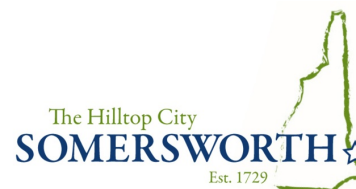
### **Literacy Tip of the Month: The ABCs for Raising a Reader**

**A**sk your child questions about the story you're reading. This helps them make sense of what they are hearing and connect it to their own lives, which builds "reading comprehension."

**B**ook family time to read with your children every day. Build it into your daily routine. It will make a difference. Time spent reading at home is shown to promote later reading success in school!

**C**reate a special reading place in your home, with your child's favorite books within reach. Set the tone that reading is a source of pleasure. Let your kids see you read for fun too!

## **City of Somersworth** **Employment Opportunities**



### **POLICE**

**Position Title:** **Dispatcher**  
**Starting Pay:** \$18.74-\$24.57  
**Date Posted:** October 18, 2021  
**Closing Date:** Reviewed as received, Open Until Filled

**Position Title:** **Part-time Parking Enforcement Officer**  
(20 hours a week, Monday - Friday, 4 hour shifts)  
**Starting Pay:** \$16.14-\$21.16  
**Date Posted:** September 14, 2021  
**Closing Date:** Open Until Filled

### **FINANCE**

**Position Title:** **Utility Billing Clerk**  
**Pay Range:** 19.38 to 23.64  
**Date Posted:** October 27, 2021  
**Closing Date:** 1<sup>st</sup> Review 11/12/2021, Open until filled

Finalist must complete pre-employment screening to include: physical, drug test & background check.



Detailed postings available online at:

<https://www.somersworth.com/human-resources/pages/employment-opportunities>

A completed City of Somersworth **Employment Application** is required for all job openings.

For more information please call Linda Corriveau at 692-9529 or email **Linda**



City Hall will be Closed on  
Thursday, November 11 in  
Observance of Veteran's Day.

**We Thank all of our Veteran's  
for your Service!**



**On the Move! and our Future is Now!**  
**We are a Community!**  
**We are Achieving Progress and Greatness!**

---