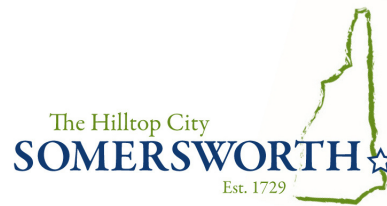


City of Somersworth

Recreation Division



2022 Park Inventory Book



2022 Park Inventory Book

Table of Contents



Somersworth City Parks Map



City Parks Overview 1



Ash Street Park 2-3



Jules Bisson Park 4-6



Malley Farm Recreational Area 7-8



Mast Point Dam Recreation Area 9-11



Memorial Drive Tennis Courts 12-13



Millennium Park 14-16



Noble Pines Park 17-21



The Riverwalk 22-23



Stein Park/ Veteran's Memorial 24-26



USS Somersworth Pocket Park 27-28



Willand Pond Recreational Area 29-32



Chapter 30: Conduct in Public Parks

Somersworth City Parks

Legend

City Park Name

- Ash Street Park
- Jules Bisson Park
- Malley Farm Recreational Area
- Mast Point Dam Recreation Area
- Memorial Drive Tennis Courts
- Millennium Park
- Noble Pines Park
- Riverwalk
- Stein Park
- USS Somersworth
- Willand Pond Recreational Area

**Mast Point Dam
Recreation Area**



NH Route 108

Rocky Hill Rd

Salmon Falls Rd

Lily Pond

Otis Rd

Noble Pines Park

**USS Somersworth
Pocket Park**

Maple St

**Memorial Drive
Tennis Courts**

Blackwater Rd

Stein Park

**Ash Street
Park**

**Willand Pond
Recreational Area**

Willand Pond

Willand Dr

Old Rochester Rd

Indigo Hill Rd

Green St

Jules Bisson Park

Stackpole Rd

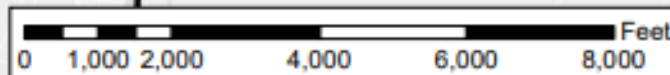
Main St

The Riverwalk

Millennium Park

**Malley Farm
Recreational Area**

Buttrickville Rd



City Parks Overview

- **The City of Somersworth has 11 public parks that include a wide variety of Recreational amenities and activities.**
- **Park hours- April 1- September 30: 7am-9pm / October 1- March 31: 7am- 7pm**

.....

Ash Street Park (4 Ash Street) – grassy area to play, stone dust pathway, benches

Jules Bisson Park (31 River Street) – gazebo, basketball court, ballfield, playground, swings

Malley Farm Recreational Area (45 Malley Farm Road)– unmarked walking trails along the Salmon Falls River, parking area, 2 softball fields

Mast Point Dam Recreation Area (121 Salmon Falls Road) – walking trails, hand-carry boat launch, fishing, picnic tables

Memorial Drive Tennis Courts (Memorial Drive across from Somersworth Middle School) – 2 tennis courts, parking area

Millennium Park (79 Stackpole Road) – dog park with small and large dog areas, softball field, volleyball courts, horseshoe pits, playground, swings, covered pavilion with picnic tables, 2 charcoal grills, park is available for private rentals April-October.

Noble Pines Park (45 Grand Street) – baseball field, basketball court, 2 playgrounds, swings, small skate park, splash pad, covered pavilion with picnic tables

The Riverwalk (Off Buffumsville Road) – scenic walking trails along the Salmon Falls River

Stein Park/ Veteran's Memorial (157 Main Street) – benches to sit and relax

USS Somersworth Pocket Park (5 Main Street) – benches to sit and relax, memorial commemorating the crew of USS Somersworth

Willand Pond Recreation Area (High Street in Somersworth and Route 108 in Dover) – walking trails, fitness stations, low elements rope course, fishing, kayaking/canoeing, picnic area with tables, benches overlooking the pond, historic restoration of a Victorian-era bear cage, signs showcasing the parks history

Ash Street Park

Address: 4 Ash Street

Size: .223 acres

Tax Map / Lot: 09 / 118

Property Use: Neighborhood pocket park

Park Description: Ash Street Park is located on the corner of Union and Ash Streets. This is a small neighborhood park offering a grassy area for children to play and a great place to walk your dog. This Park has 2 stone wall benches with a sundial feature in the center. There is a stone dust pathway through the center of the park.

Park Improvements: Significant renovations were done by the Public Works Highway Division in 2014. The renovation included the installation of a new sundial feature, stone wall bench for seating, and a stone dust pathway.

In 2021, the City will be leading an initiative to develop a monarch butterfly haven at this park to create a healthy, sustainable habitat for the monarch butterfly and pollinators.



Ash Street Park



Stonedust pathway



Park center with sundial



Sundial feature



Park bench



Stonewall benches

Jules Bisson Park

Address: 31 River Street

Size: 2.470 acres

Tax Map / Lot: 03 / 167

Property Use: Multi-Use park with special events, baseball practices & games

League Use: Somersworth Little League

Park Description: Jules Bisson Park is located at the corner of Indigo Hill and River Street. This neighborhood park contains a full size basketball court with 2 hoops, a public baseball field, a new playground structure with river theme components, swing set, a new gazebo, and a small parking area.

Park Improvements: In 2019, the City received \$45,000 in federal assistance through a 50/50 matching Land and Water Conservation Fund grant to complete several improvements & upgrades to this park. The total project cost will be \$90,000. As part of the grant project, the old playground structure was removed in July 2020 and replaced by a vibrant new playground with river theme components. A new gazebo was also installed in July 2020 as part of the project. The last phase of the project will be installing an ADA pathway to connect the parking area to the new gazebo and the ADA ramp to the playground structure. The City will also be installing 2 new benches under the gazebo.



Jules Bisson Park



Playground (New July 2020)



Jules Bisson Park



Gazebo (New 2020)



Basketball court



Baseball field



Park entrance

Malley Farm Recreational Area

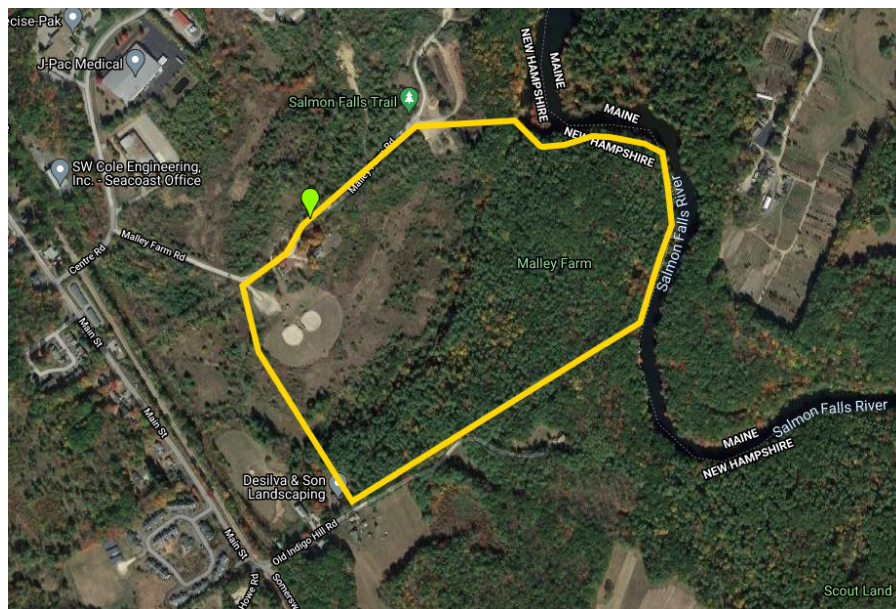
Address: 45 Malley Farm Road

Size: Portion of lot

Tax Map / Lot: 01 / 01

Property Use: Softball games, practices, tournaments, & unmarked walking trails

Park Description: Malley Farm Recreational Area consists of two separate areas located off Centre Road. One area offers walking trails along the Salmon Falls River, which are unmarked and not maintained by the City. The other area offers two softball fields with covered dugouts, a concession stand, storage shed, and a large parking area.



Malley Farm Recreational Area



Softball field A



Softball field B



Concession



Dugout



Storage shed



Field A infield

Mast Point Dam Recreation Area

Address: 105 Salmon Falls Road

Size: 14.700 acres

Tax Map / Lot: 53 / 01

Property Use: Walking trails, hand-carry boat launch, fishing, picnicking

Park Description: Mast Point Dam Recreation Area is located off Salmon Falls Road. This park offers spectacular views of the Salmon Falls River and a peaceful area to enjoy a walk, picnic, or even do some fishing. There is a hand-carry boat launch that allows easy access for kayaking and canoeing on the river. There are 2 picnic areas with beautiful views of the river.

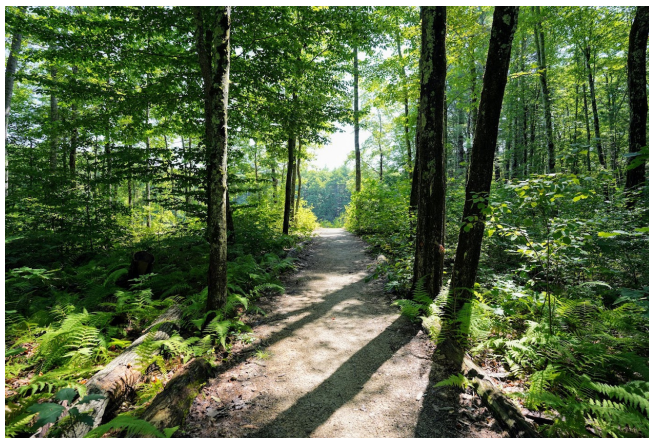
Park Improvements: In 2016, the City completed major improvements at this park at a total cost of \$57,000. The City received \$28,500 in federal assistance through a 50/50 matching Land and Water Conservation Fund grant to redevelop this park. This grant project included establishing a new trail network with hard packed stone dust, re-grading the access road & improved parking area, constructing a hand-carry boat launch and a footbridge, adding new signage & park message board, and establishing 2 new picnic areas with tables. The City Public Works Department assisted with this project and helped complete all of the major improvements. Liberty Mutual held volunteer service days at Mast Point Dam in 2015 and 2016 to help City staff with creating the trails and picnic areas. Timberland held a volunteer service day in 2015 to help finish the trails, they built 6 new picnic tables, 3 benches, and they constructed a kayak/canoe rack for visitors to use. In July 2020, the City installed a memorial trail sign naming the trail the Frank Richardson Conservation Trail. Frank Richardson was a member of the Somersworth Conservation Commission for 30 years and was instrumental in the conservation of the Mast Point Dam property.



Mast Point Dam Recreation Area



Boat Launch path with signage



Boat launch path



Hand-Carry boat launch

Mast Point Dam Recreation Area



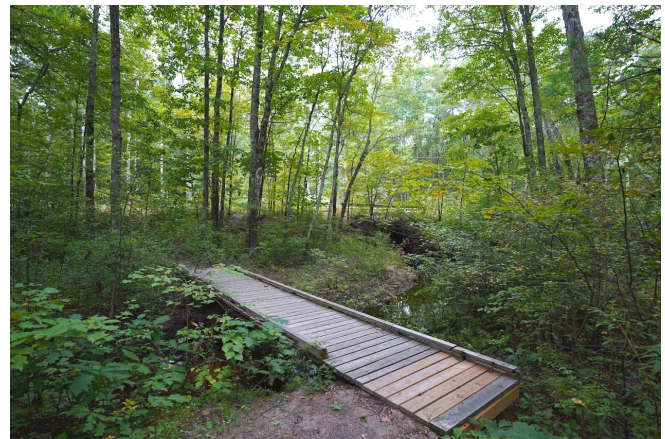
Park message board



Canoe/kayak rack



Frank Richardson Trail



Hemlock footbridge



Picnic area



Salmon Falls River

Memorial Drive Tennis Courts

Address: Memorial Drive (same lot as High School & Middle School)

Size: Portion of lot

Tax Map / Lot: 14 / 43

Property Use: 2 tennis courts, parking area, snow storage

Park Description: The Memorial Drive tennis courts are located on Memorial Drive across from the Somersworth Middle School. This area has two beautiful courts that are open to the Public from April to late October, weather permitting.

Park Memorials:

Fred Brown Tennis Courts: Named after Fred Brown who was Mayor of Somersworth before he became Governor of New Hampshire, a post he held from 1923-1925. Fred went on to serve in the United States Senate from 1932-1938. He also served as Comptroller General of the United States from 1939-1940. Fred is the only Mayor in Somersworth to become Governor to date. A picture of him is permanently displayed in the City Council Chambers.

Sandra Armstrong Memorial: Originally this memorial was placed at Noble Pines Park where 2 tennis courts could be found. Sandra was an avid tennis player throughout her life. Sandra passed away at an early age and the tennis courts were named after her. When the tennis courts were removed from Noble Pines Park it was decided that her memorial plaque would be moved to the Fred H. Brown tennis courts on Memorial Drive.



Memorial Drive Tennis Courts



Fred H. Brown Memorial Tennis Courts



2 Tennis courts



Sandra A. Armstrong Memorial

Millennium Park

Address: 79 Stackpole Road

Size: 8.000 acres

Tax Map / Lot: 20 / 04

Property Use: Multi-use; dog park, baseball leagues, softball leagues, Recreation special events, private rentals

Lease Agreements: Open for private rentals April-October (For more information on private reservations please visit our website below.)

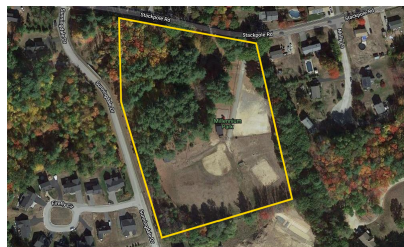
www.somersworth.com/parks-recreation/pages/millennium-park-reservations

League Use: Somersworth Little League

Park Description: Millennium Park is located on 99 Stackpole Road. This park is the site of our new dog park that has two separate play areas, one for smaller dogs and one for larger dogs. There is a fire hydrant feature that offers water for your dog. Two new benches will soon be added, providing a place for dog owners to rest. This park also offers a lighted softball field, 2 sand volleyball courts, 2 horseshoe pits, a playground and swing set, a covered pavilion with picnic tables, 2 charcoal grills, and a park house with 2 restrooms. Millennium Park is available for private rentals from April through October.

Park Improvements: In 2017, park improvements were completed by the Sunningdale Subdivision Developer. Significant improvements included the installation of a new playground and swing set, renovations to the park house restrooms, and a new trail was constructed to connect the park to the adjacent Sunningdale housing development. As part of this project six of the eight horseshoe pits were removed as well as the old light posts that were not operational. Improved drainage was completed in the parking area and all of the remaining light posts & bleachers were repainted. In October 2020, the City opened the new Dog Park at Millennium Park.

St Laurent Park Memorial: This park was first known as Forest Glade Park but was later renamed after Mayor Romeo St Laurent who served as Somersworth City Mayor for 7 years. The memorial was relocated to Millennium Park when St. Laurent Park was decommissioned by the City Council.



Millennium Park



Playground



Swings



Pavilion



BBQ grills



Softball field with lights



Horseshoe Pits

Millennium Park



Volleyball Courts



Dog Park entrance



Dog Park (NEW October 2020)



Small dog & large dog area signage



Rec building with storage & 2 restrooms



St. Laurent Park Memorial Plaque

Noble Pines Park

Address: 45 Grand Street

Size: 11.900 acres

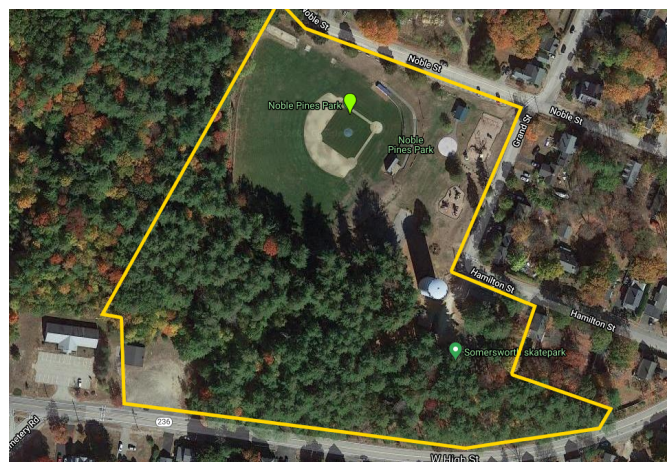
Tax Map / Lot: 13 / 12

Property Use: Multi-use; baseball, soccer, summer camp, special events

League Use: Babe Ruth, Somersworth High School baseball, Somersworth High School & Middle School soccer, & ROSO Soccer Club.

Park Description: Noble Pines Park is located in Somersworth's Historic District. The park contains a Splash Pad with 6 spray/mister features, a covered pavilion with picnic tables, a full basketball court, baseball field, two age appropriate playgrounds, swings, and a small skate park. The Recreation building on site has a small activity room and kitchen area, restrooms, and storage. The Rec building houses the 8-week Kids Camp and Trends Camp summer programs. There are also 2 green storage buildings used to store various sports equipment and park maintenance supplies. The baseball field is maintained in partnership with the Babe Ruth organization and the High School Baseball program.

Park Improvements: In 2013, the City completed major improvements at this park at a total cost of \$78,094. The City received \$39,047 in federal assistance through a 50/50 matching Land and Water Conservation Fund Grant. Significant improvements included the installation of the Splash Pad, skate park, and the covered pavilion with picnic tables. In September 2015, Timberland held a volunteer service day to help make several enhancements that included adding new benches around the ballfield, painting the concession stand and deck, installation of hooks and shelves in the Rec Building, painting the activity room, and construction of 8 storage benches.



Noble Pines Park



Pavilion with picnic tables



Somersworth Splash Pad

Noble Pines Park



Upper Playground (Ages 5-12)



Playground picnic table



Swings



Lower Playground (Ages 2-5)



Noble Pines Park



Baseball field



Concession Stand & PA booth



Paver pathway



Dugout

Noble Pines Park



Basketball court



Somersworth Skate Park



Summer Camp Rec Building



Park storage building

The Riverwalk

Address: Off of Buffumsville Road- along the river

Size: 9.830 acres

Tax Map / Lot: 03 / 07

Property Use: Walking trail, fishing

Park Description: The Riverwalk is comprised of a trail that winds along beautiful Salmon Falls River and offers an ideal location for a leisurely stroll, a place to walk the dog, and there's great fishing spots along the trail. This scenic park is also great place to see the fall foliage.



The Riverwalk



Park entrance



Park signage



Trail



Views of Salmon Falls River from trail

Stein Park- Veteran's Memorial

Address: 157 Main Street

Size: Portion of lot

Tax Map / Lot: 10 / 179

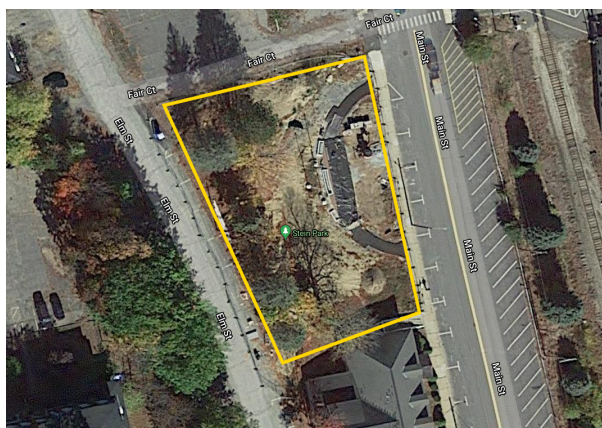
Property Use: Veteran's Memorial site and green-space for sitting.

Park Description: Stein Park is located next to the Summersworth Historical Museum on Main Street. There is a new Veteran's Memorial located at this park as well as benches for sitting.

Veteran's Memorial: The new Veteran's Memorial was completed in 2020 and includes memorial stones for the U.S. Coast Guard, Navy, Army, Marine Corps and Air Force. There's an engraved brick walkway to honor veteran's, the City relocated the USS Somersworth Memorial to this site, and the American flag, New Hampshire flag, and POW/MIA flag are also flown at this park.

Stein Park Memorial: Stein Park was originally known as Memorial Park until 1971 when the park was renamed to Stein Park. Harry Stein was the founder of the Somersworth Shoe Company in 1936 and this company provided steady work for many Somersworth residents throughout the next four decades.

USS Somersworth Memorial: Originally, this memorial was located at the USS Somersworth Pocket Park. The park was created in 1974 as part of a Somersworth Conservation Commission project. In July 2004, it was rededicated as the USS Somersworth Park with the crew of the USS Somersworth present for dedication. The City relocated this memorial to the new Veteran's Memorial at Stein Park in 2020.



Stein Park



Somersworth Veteran's Memorial (NEW November 2020)



**City Seal/Park dedicated
November 11,2020**



Veteran's Memorial stone

Stein Park



Memorial stones for the U.S. Coast Guard, Navy, Army, Marine Corps, & Air Force



USS Somersworth Memorial



Harry Stein Memorial Plaque



Park memorial bench



Park view from side



Park view from top

USS Somersworth Pocket Park

Address: 5 Main Street

Size: Portion of lot

Tax Map / Lot: 11 / 210

Property Use: Small park for sitting and site of the City Christmas tree

Park Description: The USS Somersworth is a small pocket park tucked into the corner of Market and Main Streets, right in the heart of downtown Somersworth. It's a great place to sit and take a break at a bench while visiting the downtown area. The Memorial commemorating the crew of the USS Somersworth was relocated from this park to the new Veteran's Memorial at Stein Park in 2020.



USS Somersworth Pocket Park



Park view from Main Street



Park benches



Willand Pond Recreational Area

Address: Off High Street (Access road in Somersworth is adjacent to NH Liquor & Wine Outlet)

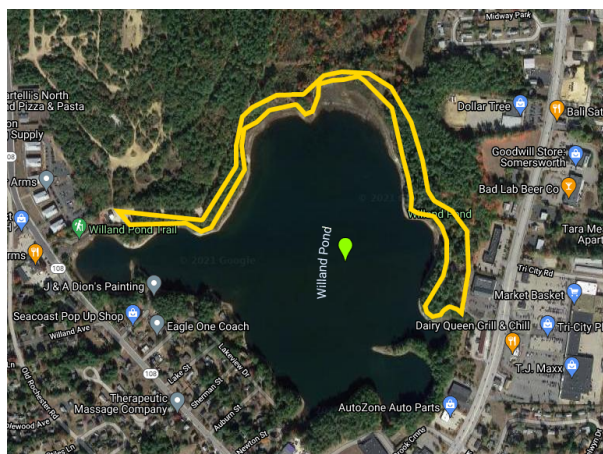
Size: Not listed

Tax Map / Lot: 42 / 1A

Property Use: Walking trails, fitness stations, low elements rope course, fishing, kayaking/canoeing, and picnics.

Park Description: Willand Pond is located along the northern side of the pond, beginning in Dover and ending in Somersworth. The trail utilizes a number of easements to continue the trail over properties not owned by either Dover or Somersworth. Access is available from Route 108 in Dover or from High Street, behind the location of the new State of NH Liquor & Wine Outlet in Somersworth. In addition to the trail system there are fitness stations located along the trail, a low elements rope course with 6 features, a Victorian Era bear cage, raised flower garden with informational signs, and a picnic area with tables and benches overlooking beautiful Willand Pond. The original trail network was developed through a Land and Water Conservation Fund Grant that was a joint effort between both the City of Dover and Somersworth.

Park Improvements: There have been many improvements to the Willand Pond Recreational Area over the past few years. Somersworth native, David Brackett, completed his Eagle Scout project in 2014 with the restoration of the historic Victorian Era bear cage, a raised flower garden, and 3 beautiful signs that showcase the park's rich history. The company Timberland completed a major service project at this park in 2015 to include the installation of 6 low-element ropes course features, several stretching and fitness stations located along the trail, and they installed benches for additional seating.



Willand Pond Recreational Area



Raised flower garden & informational signs



Stretching stations along trail

Willand Pond Recreational Area



Low-Elements Rope Course (6 features total)

Willand Pond Recreational Area



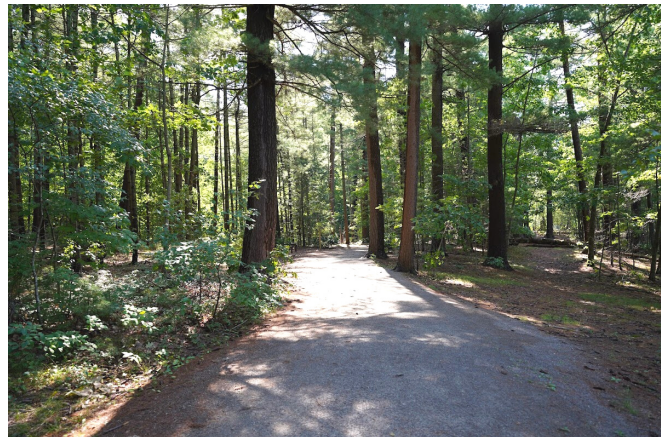
Picnic area



Park tree signage



Footbridge



Trail



Park entrance signage



Old Victorian Era bear cage